

Cardiology Update Heart Failure

DR. RAVI KODE

ST. JOHN'S MEDICAL CENTER

Disclosures:

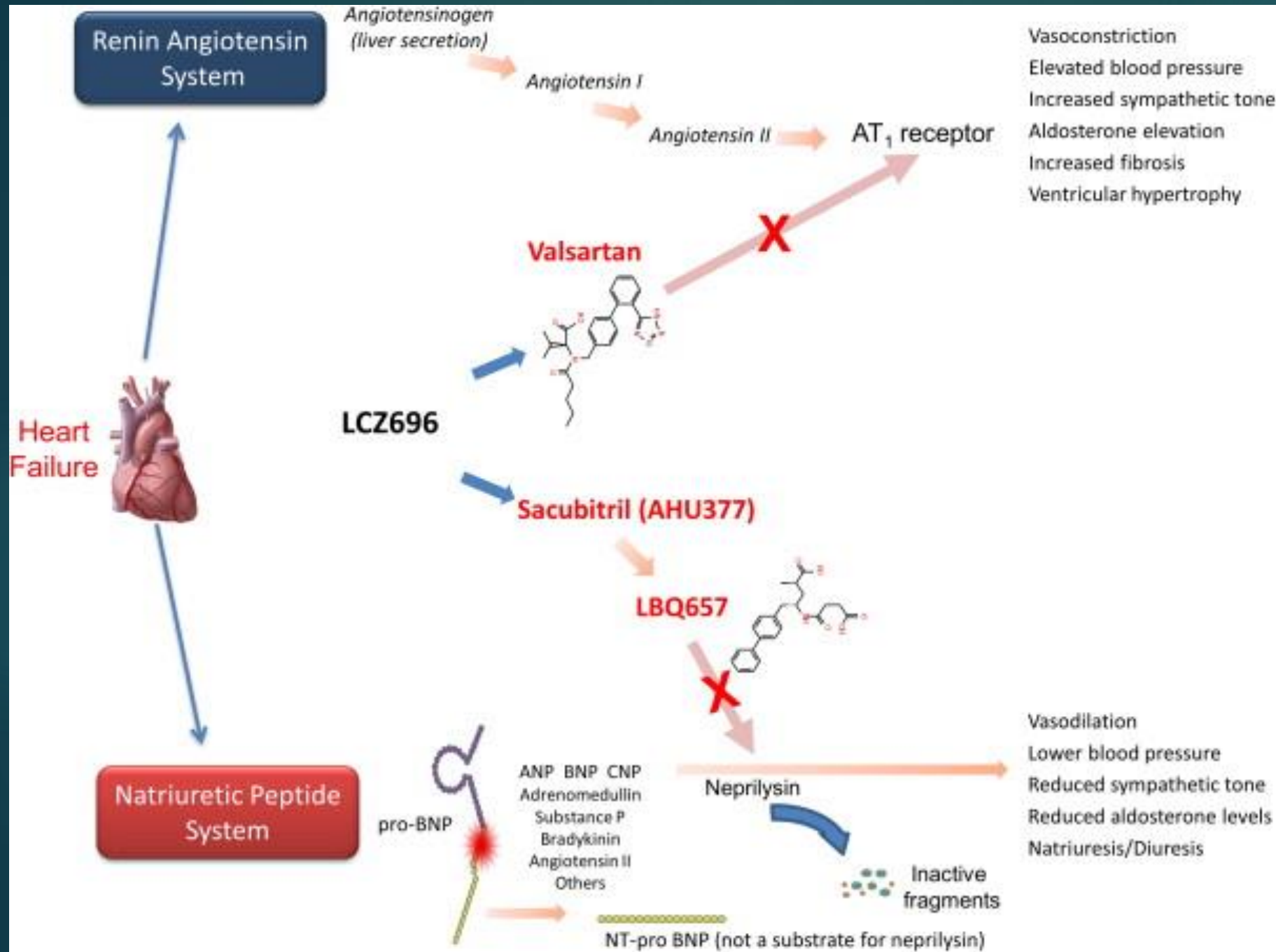
- ▶ No financial interests to disclose

What's new in Heart Failure

- ▶ Entresto
- ▶ Corlanor

Heart Failure Update

- ▶ Entresto: PARADIGM-HF
 - ▶ Neprilysin Inhibitor + ARB VS. Enalapril



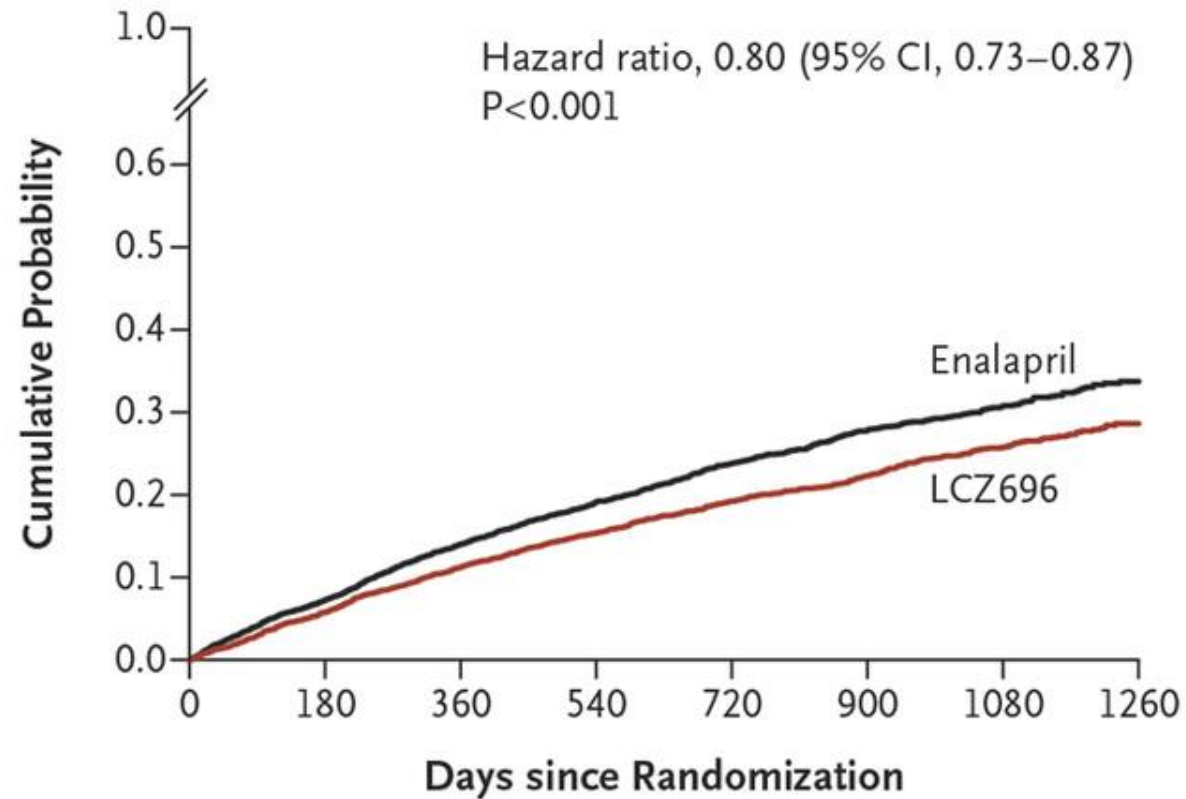
JCHF. 2014;2(6):663-670. doi:10.1016/j.jchf.2014.09.001

Entresto

- ▶ 3 Dosages
 - ▶ 24/26mg BID
 - ▶ 49/51mg BID
 - ▶ 97/103mg BID
- ▶ Side Effects:
 - ▶ Angioedema
 - ▶ Hypotension
 - ▶ Hyperkalemia
 - ▶ Impaired renal function
 - ▶ Increases Lithium Concentrations

Paradigm-HF

A Primary End Point

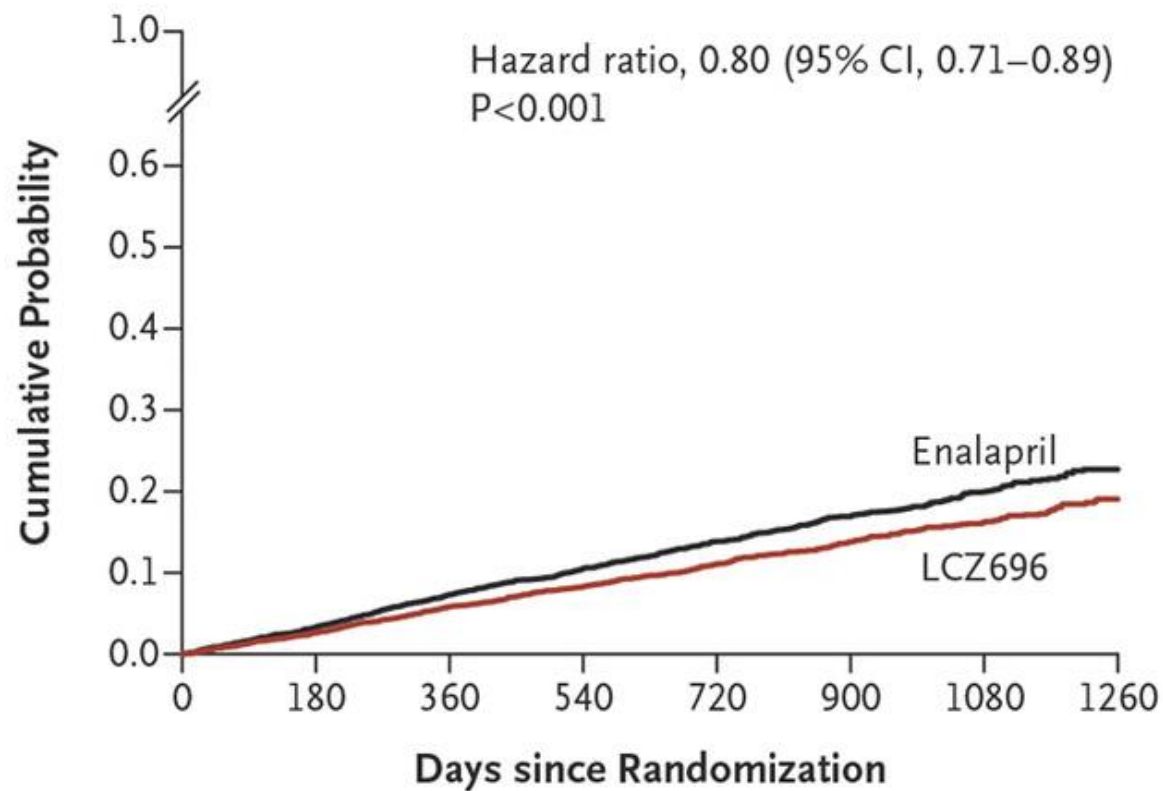


No. at Risk

LCZ696	4187	3922	3663	3018	2257	1544	896	249
Enalapril	4212	3883	3579	2922	2123	1488	853	236

Paradigm-HF

B Death from Cardiovascular Causes

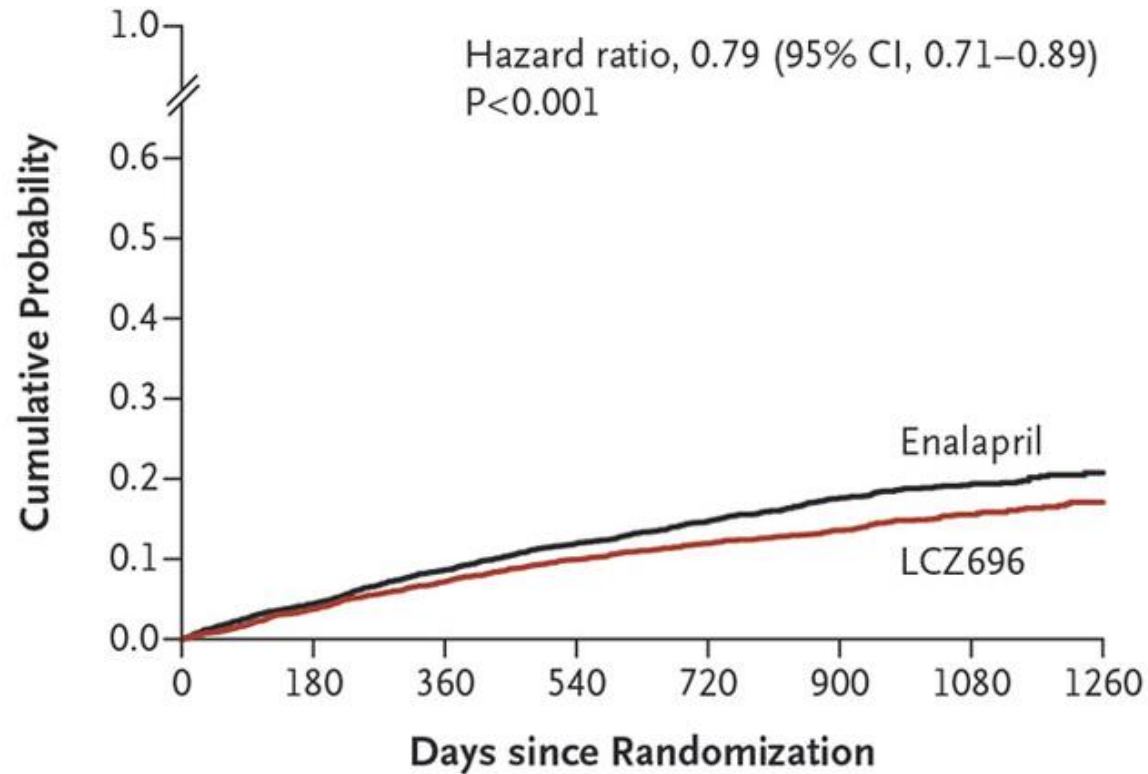


No. at Risk

LCZ696	4187	4056	3891	3282	2478	1716	1005	280
Enalapril	4212	4051	3860	3231	2410	1726	994	279

Paradigm-HF

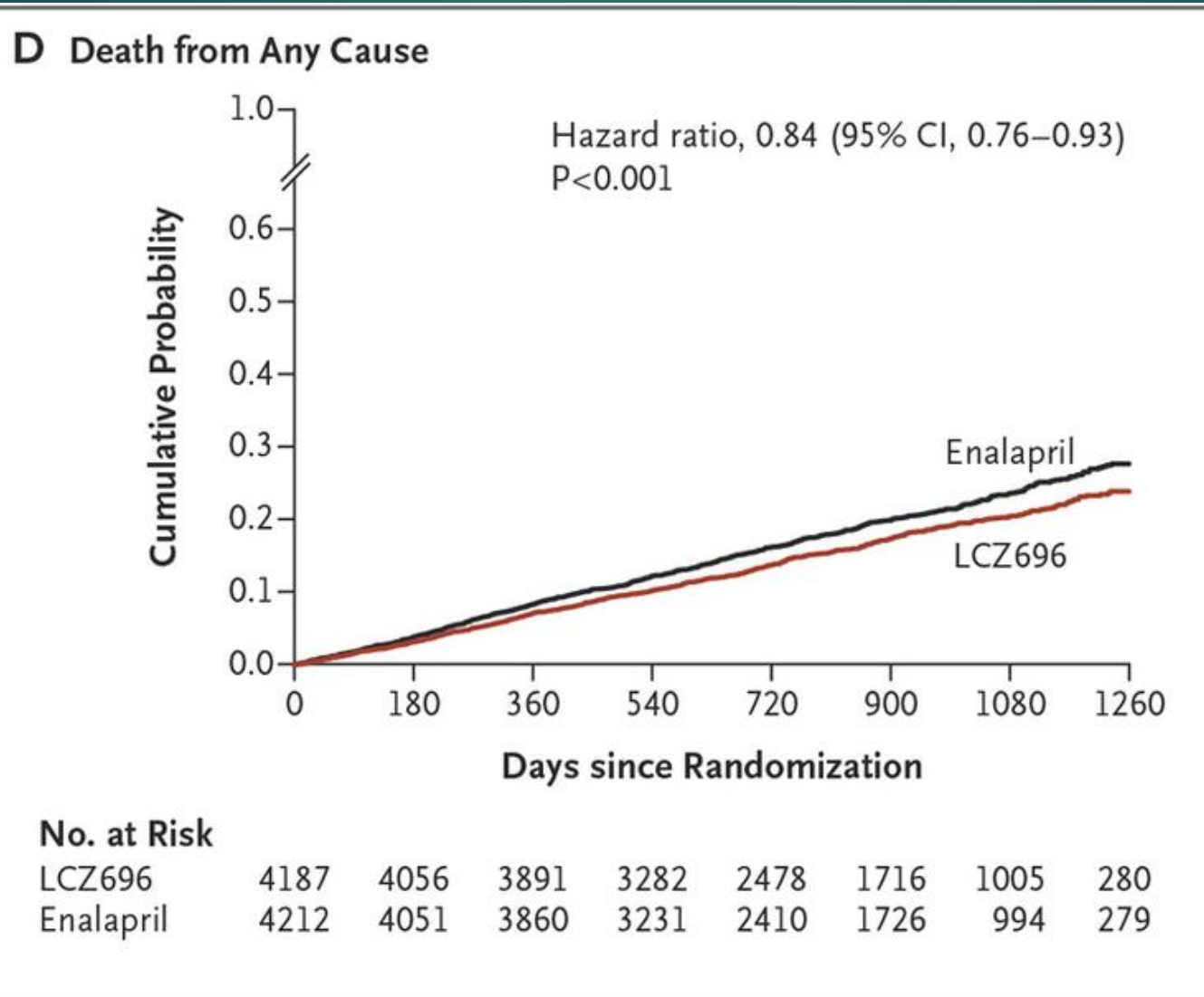
C Hospitalization for Heart Failure



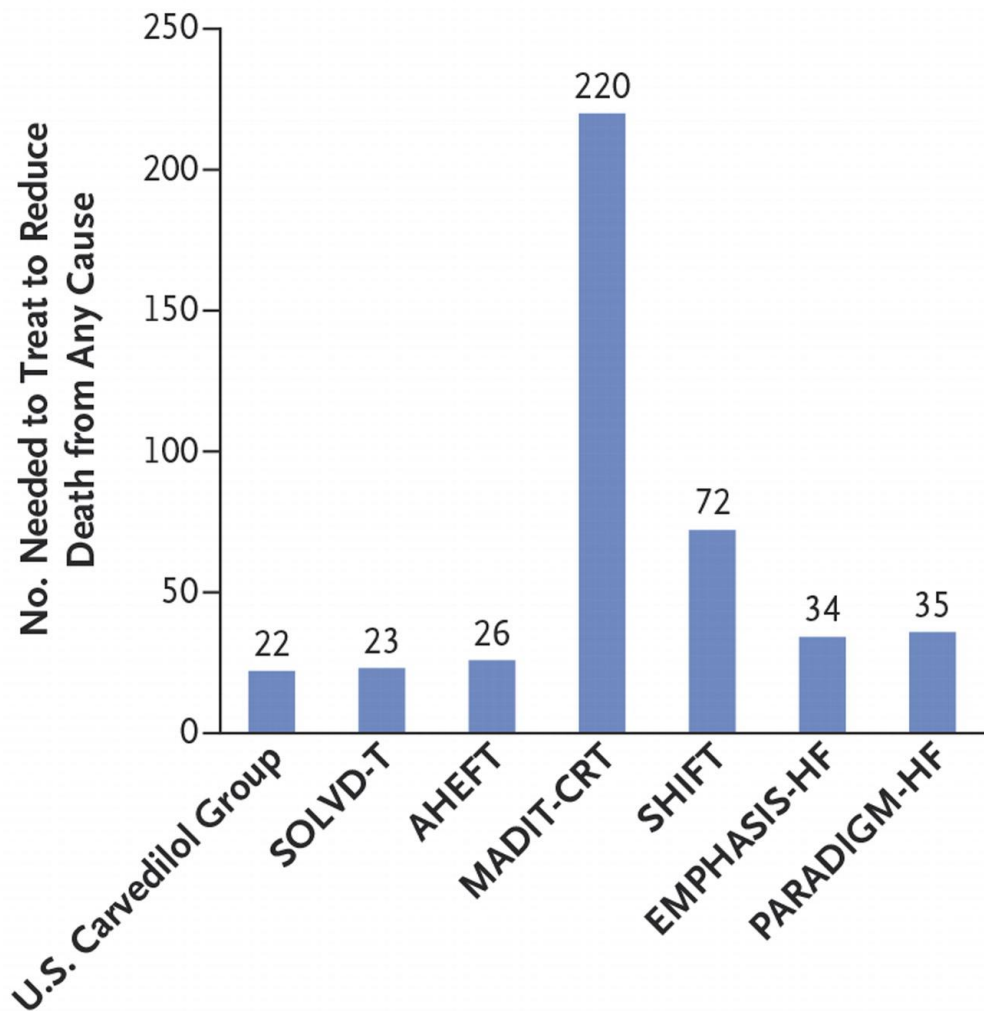
No. at Risk

LCZ696	4187	3922	3663	3018	2257	1544	896	249
Enalapril	4212	3883	3579	2922	2123	1488	853	236

Paradigm-HF

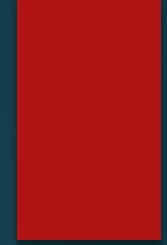


Paradigm-HF



Study	N
Carvedilol	398/696
SOLVD	1285/1284
AHEFT	518/532
MADIT-CRT	731/1089
SHIFT	3268/3290
Emphasis-HF	1364/1373
PARADIGM-HF	4187/4212

Guideline Update:

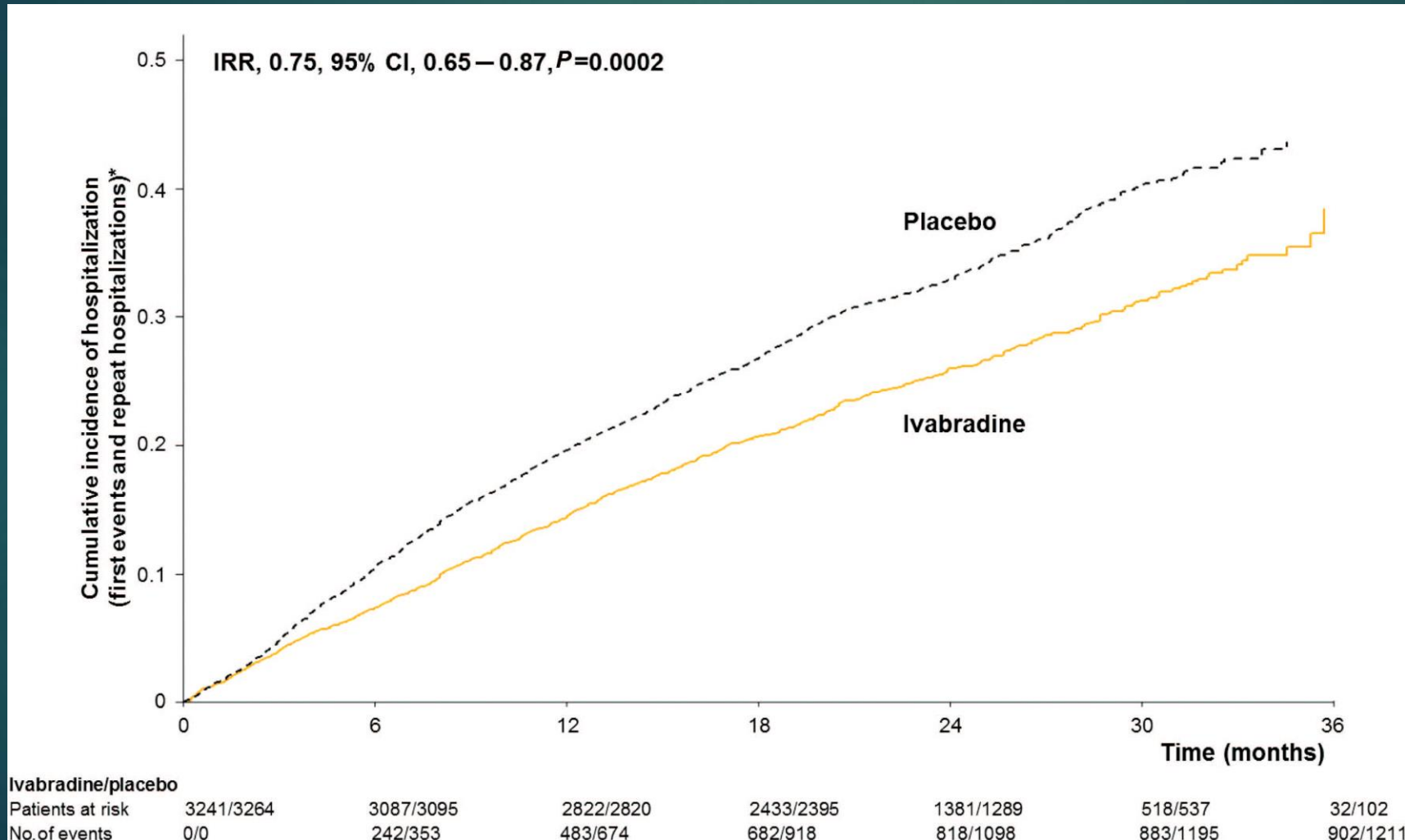


Recommendations for Renin-Angiotensin System Inhibition With ACE Inhibitor or ARB or ARNI		
COR	LOE	Recommendations
I	ACE: A	The clinical strategy of inhibition of the renin-angiotensin system with ACE inhibitors (<i>Level of Evidence: A</i>) (9-14), <u>OR</u> ARBs (<i>Level of Evidence: A</i>) (15-18), <u>OR</u> ARNI (<i>Level of Evidence: B-R</i>) (19) in conjunction with evidence-based beta blockers (20-22), and aldosterone antagonists in selected patients (23, 24), is recommended for patients with chronic HFrEF to reduce morbidity and mortality.
	ARB: A	
	ARNI: B-R	

SHIFT

- ▶ EF < 35%
- ▶ HR > 70
- ▶ Dosages: 2.5mg BID, 5mg BID, 7.5mg BID
- ▶ Hepatic Impairment: Contraindicated in severe Child Pugh C
- ▶ Renal Impairment: Do not use CrCL <15
- ▶ Blocks the hyperpolarization-activated cyclic nucleotide-gated (HCN) channel responsible for the cardiac pacemaker I(f) 'funny' current, which regulates heart rate

SHIFT



J.S. Borer et al. the
SHIFT study
European Heart
Journal 8/27/2012

TAVR

- ▶ TAVR is approved for high risk and moderate RISK SURGICAL CANDIDATES
- ▶ Percutaneous aortic valve replacement