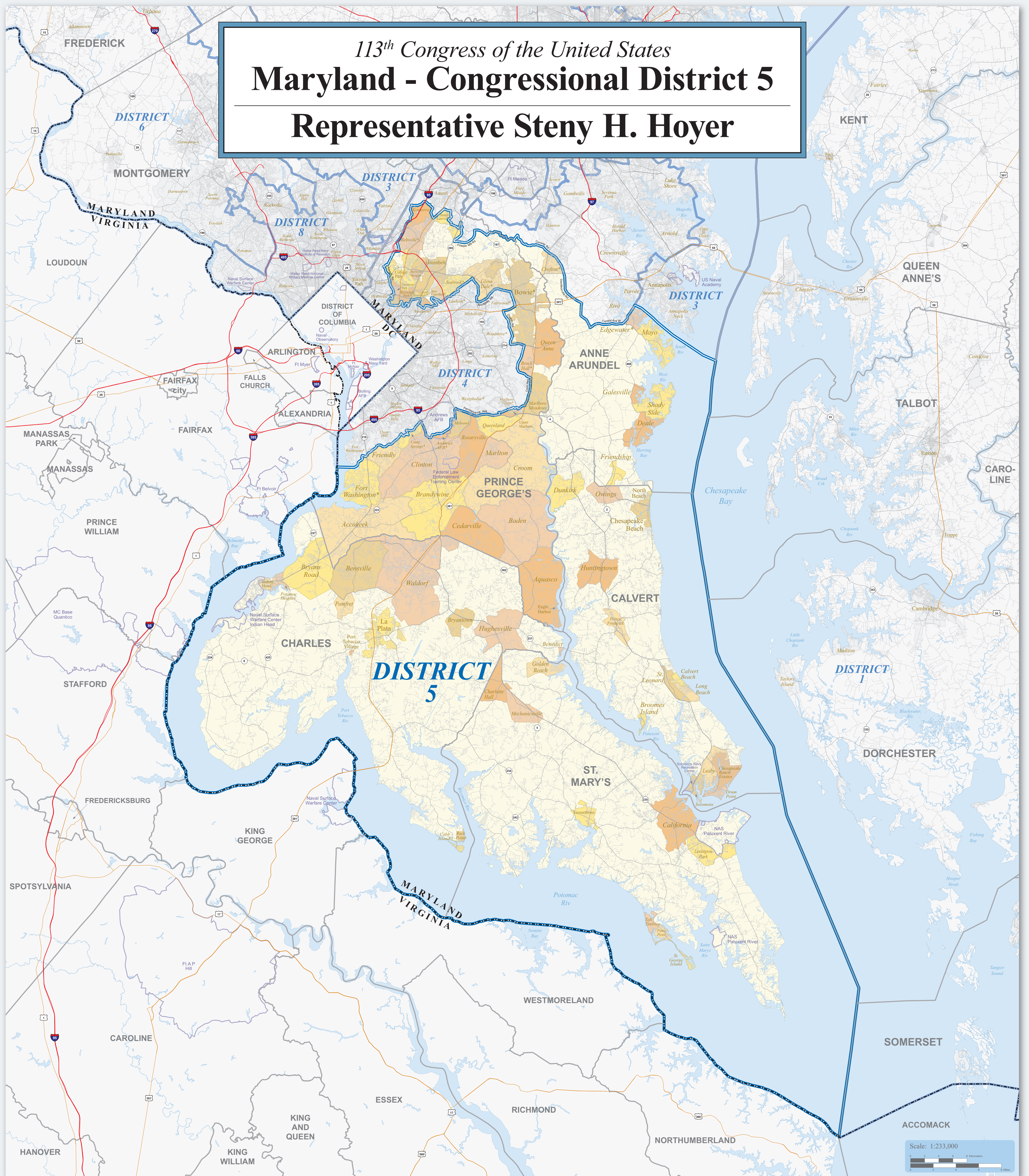


# 113<sup>th</sup> Congress of the United States

## Maryland - Congressional District 5

### Representative Steny H. Hoyer



#### Map Legend

	Maryland Congressional District 5
	Other Maryland Congressional District
	American Indian Reservation / Off-Reservation Trust Land (Federal)†
	American Indian Reservation (State)†
	State or Statistically Equivalent Entity
	County or Statistically Equivalent Entity
	Incorporated Place (Inside of Congressional District 5)†
	Census Designated Place (CDP) (Inside of Congressional District 5)†
	Incorporated Place (Outside of Congressional District 5)†
	Census Designated Place (Outside of Congressional District 5)†
	Military Installation
	Water Body
	Interstate
	U.S. Highway
	State Highway or State Recognized Road
	Other Road or Ferry

†Labels for entities located both inside and outside of Congressional District 5 include a \*\*.

Congressional districts are those in effect for the 113th Congress of the United States (January 2013-2015); all other legal boundaries and names are as of January 1, 2010. The boundaries shown on this map are for Census Bureau statistical data collection and tabulation purposes only; their depiction and designation for statistical purposes does not constitute a determination of jurisdictional authority or rights of ownership or entitlement. Source: U.S. Census Bureau's MAF/TIGER database (TAB10) Projection: State-based Albers' Equal Area

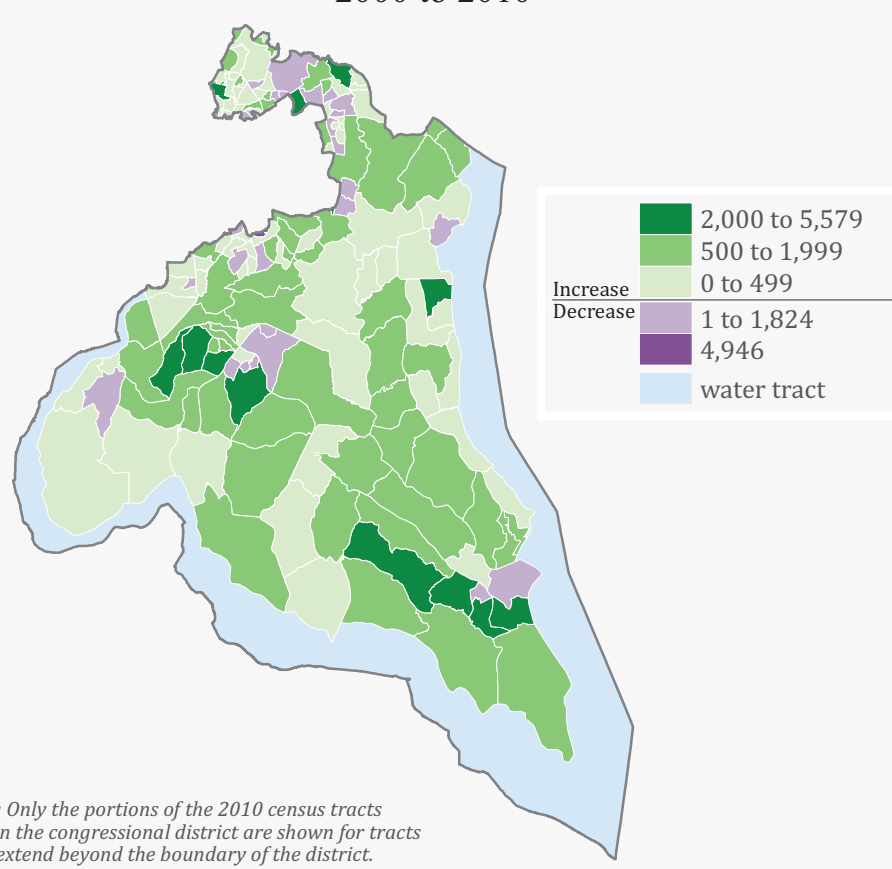
#### Congressional District 5 Profile

<b>Population</b>	
Total Population:	720,472
Age - Under 5:	44,271
Age - 5 to 17:	131,295
Age - 18 to 24:	79,647
Age - 25 to 39:	130,975
Age - 40 to 54:	175,680
Age - 55 to 64:	84,810
Age - 65+:	72,794
Percent Male:	48.8%
Percent Female:	51.2%
Persons per Square Mile:	486.4
<b>Housing</b>	
Total Housing Units:	269,177
Percent Occupied:	92.8%
Percent Owner-Occupied:	77.4%
Percent Renter-Occupied:	22.6%
Percent Vacant:	7.2%
<b>Land</b>	
Total Land Area (square miles):	1,481.24
Percent Land Area - Urban:	22.1%
Percent Land Area - Rural:	77.9%
<b>Geographic Entity Totals</b>	
American Indian Reservations/Off-Reservation Trust Lands:	0 (0)
Counties:	5 (2)
Incorporated Places:	16 (4)
Census Designated Places (CDPs):	68 (19)
ZIP Code Tabulation Areas:	101 (25)
Census Tracts:	171 (35)

**Total (in bold) includes partial entities (in parentheses).**

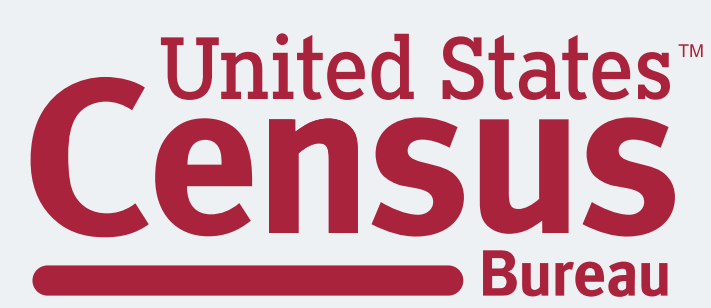
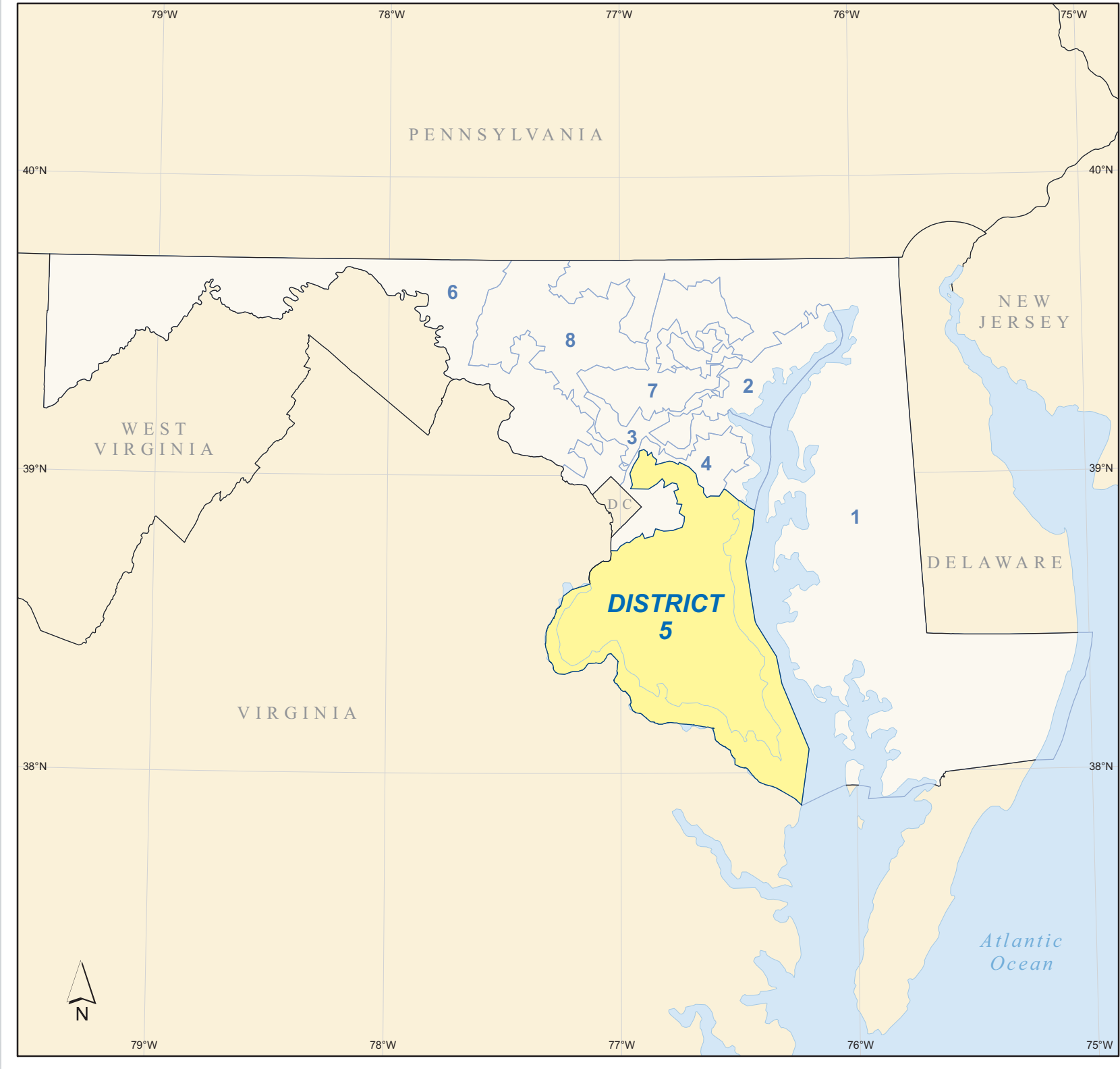
Source: 2010 Census

#### Change in Number of People by Census Tract: 2000 to 2010



Note: Only the portions of the 2010 census tracts within the congressional district are shown for tracts that extend beyond the boundary of the district. Source: Census 2000 and 2010 Census Redistricting Data Summary File; 2010 Census boundaries.

#### Location of Maryland's 5<sup>th</sup> Congressional District - 8 Districts Total



For general information, contact the Congressional Affairs Office at (301) 763-6100. For more information regarding congressional district plans as a result of the 2010 Census, redistricting, and voting rights data, contact the Census Redistricting Data Office at (301) 763-4039 or www.census.gov. For information regarding other U.S. Census Bureau products, visit www.census.gov.