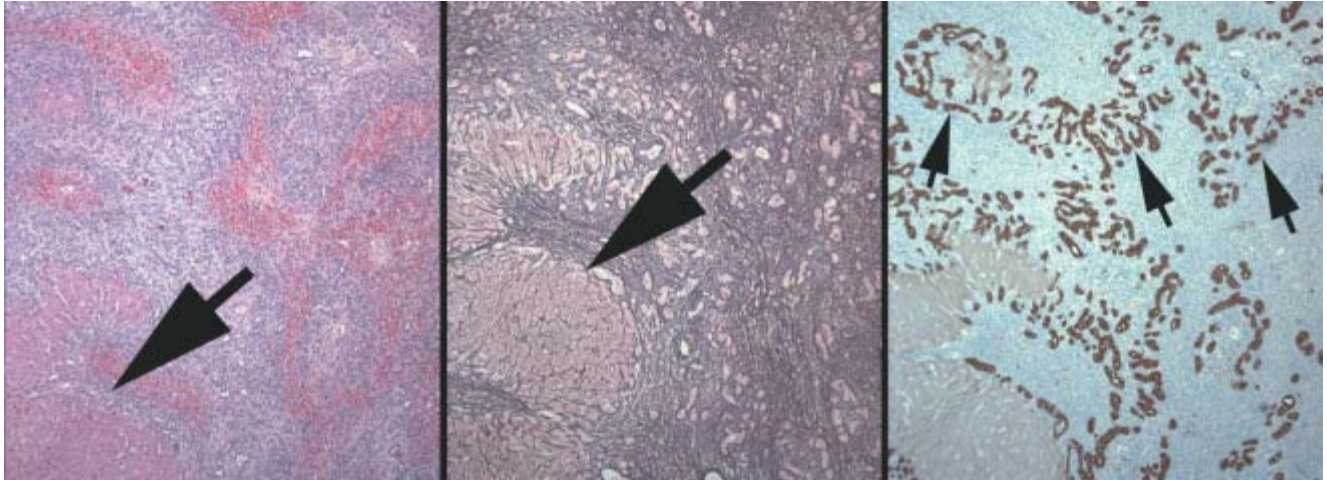


Figure 2. Microscopic findings for patient 2.



Left. A conventional hematoxylin--eosin stain shows only rare islands of surviving regenerative lobular cellularity (*arrow*). (Original magnification, $\times 5$.) **Middle.** Reticulin silver staining demonstrates dense condensation of fibers surrounding persisting ducts without any intervening lobules, except in the regenerative nodule (*arrow*). (Original magnification, $\times 5$.) **Right.** Immunohistochemical stain for cytokeratin cocktail AE1/AE3 highlights the dense aggregates of ducts (*arrows*) uninterrupted by lobular elements. (Original magnification, $\times 5$.)