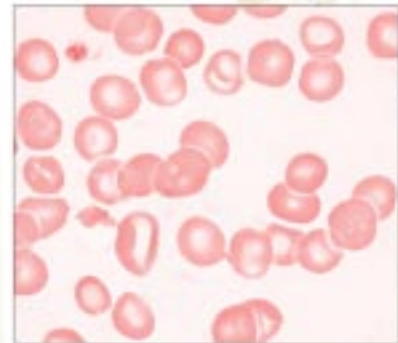




# 2009 Catalog and Information Guide for Proficiency Testing

**Improving Quality Care Through  
Accurate Diagnostic Testing**



*A Service of*  
The American College of Physicians

# What's New

## Expanded Online Options

- Evaluation Reports—includes historical reports from 2006 to the present
- Improved Results Reporting—take a second look! See Page 17.
- Participant Summaries—print only certain pages or the entire document
- Enrollment
- Renew by using the online enrollment form
- Program Forms

## At-a-Glance Hematology Table

See page 5 for assistance in selecting the correct module for your 5-part differential instrument.

## Continuing Education—CEexpress

New CEexpress Courses:

- MLE CEexpress 5: Urine Culture Basics
- MLE CEexpress 6: Evaluating Red Blood Cells
- MLE CEexpress 7: Personnel Training and Competency Assessment

## Educational Resources

Look for an all-inclusive “Educational Resource” catalog in coming weeks.

## New Modules

### HEMATOLOGY

- Hematology with 5-part Differential (module 229). See page 5.
- Sedimat 15 ESR (module 248). See page 6.

### COAGULATION

- CoaguChek XS Plus Prothrombin Time (module 330). See page 6.

### IMMUNOLOGY

- Tear Lactoferrin (module 756). See page 10.
- Tear IgE (module 757). See page 10.
- ANA Expanded (module 782). See page 10.
- ANA Expanded—Add-On (module 783). See page 10.

### CHEMISTRY

- Serum Alcohol and Acetone (module 835). See page 12.
- Ammonia (module 836). See page 12.
- Afinion Glycohemoglobin (module 851). See page 13.
- PSA—Add-On (module 859). See page 13.

### MICROBIOLOGY

- MRSA Screen (module 695). See page 9.

## Modules No Longer Available

### CHEMISTRY

- Theophylline (module 832)
- Theophylline—Add-on (module 833)

## Revised Modules

### HEMATOLOGY

See Table on page 5

- Hematology with 5-part differential (module 226)—Now only for Beckman-Coulter instruments.
- Hematology with 5-part differential (module 223)—Now includes all Abbott instruments.

### PPM

- Provider-Performed Microscopy (module 534). Includes Fern testing. See Page 7.

### CHEMISTRY

- Chemistry Module (module 810)—Now includes Direct Bilirubin-module 842. See page 11.
- Piccolo Waived Chemistry (module 812). See page 11.  
*New Analytes: Chloride, CO<sub>2</sub>, Potassium, Sodium*
- Enzyme Chemistry—Add-On (module 823). See page 11.  
*Dropped Analyte: Acid Phosphatase*
- i-STAT Chemistry (module 817 and 818). See page 12.  
*New Analyte: Ionized Calcium*
- Direct Bilirubin (module 842). Now included in the Chemistry Module 810. See page 12.
- Endocrinology/Hematology/Oncology (module 860). See page 13.  
*New Analyte: Transferrin*  
*Dropped Analyte: PAP*
- PSA (module 861). Name change. See page 13.  
*Dropped Analyte: PAP*
- Urine Drug Screen (module 868). See page 13.  
*New Analytes: Acetaminophen*  
*Buprenorphine*  
*Morphine*  
*Oxycodone*

### MICROBIOLOGY

- Bacteriology 1 (module 630)—Now contains 6 culture specimens. See page 8.

# Table of Contents

## OVERVIEW

What's New .....	Inside front cover
Overview/How It Works .....	4

## TEST INDEX AND MODULE DESCRIPTIONS

Test Index .....	2-3
Hematology .....	5
Coagulation .....	6
Blood Bank .....	6
Urinalysis .....	7
PPM .....	7
Microbiology .....	8
Immunology .....	9
Chemistry .....	11

## WAIVED TESTING

Waived Testing .....	14
"E-Notification" of Waived Devices and Recalls .....	14

## PROVIDER-PERFORMED MICROSCOPY (PPM)

.....	7, 16
-------	-------

## LAB SUPPLIES & SERVICES

Online Result Reporting System—WDES .....	16, 17
Off-Schedule Testing .....	16

## ORDERING AND DISCOUNTS

MLE ADVANTAGE Discounts .....	18
Lab Alliance with COLA and ACP .....	18, 19
Recruit 1, Waive 2 Program .....	18, 20
Ordering Information .....	21, 22
Price List .....	23
Proficiency Testing Order Form .....	24

### Attention: Renewing MLE Participants! Save \$75 on your 2009 enrollment!

Help increase peer group participation with MLE's Recruit 1, Waive 2 Program, by enrolling your colleagues in the MLE Program. You AND your colleagues will save \$75 for the 2009 program year! For details, see pages 18 and 20.

# At a Glance

## Customer Service Hours and Contact Information

Monday through Friday from 9:00 a.m. to 5:00 p.m. ET

**Telephone:** 1-800-338-2746, option 5

**E-mail:** mle@acponline.org

**Fax:** 202-835-0440

**Web:** www.acponline.org/mle

## Event Dates

MLE ships 3 times per year. Enroll throughout the year.

After the first event, module pricing is pro-rated.

M1: February 2 • M2: May 4 • M3: September 14

## Enrollment/Renewal of Proficiency Testing

**Online Order Form:** Visit [www.acponline.org/mle](http://www.acponline.org/mle). Click on the "Enrollment Info" link. Complete the appropriate electronic order form to automatically calculate pricing, and you will receive an order summary page.

**MLE PT Order Form:** Detach the order form, complete it and fax it. (If submitting a purchase order, please fax.)

**Fax:** 202-835-0440.

### Mail:

Mailing Form with Payment	Mailing Form w/o Payment
RO800 ACP/MLE PO Box 7777 Philadelphia, PA 19175-0800	MLE/ACP Suite 700 25 Massachusetts Ave. NW Washington, DC 20001-7401

## Method of Payment

Enroll now to ensure the availability of specimens for the 2009 program year. We will not bill you until November. Subsequent enrollments will be billed within 1 week after activation and are payable within 30 days. Additional payment options include credit card (Mastercard or Visa), purchase order, or check.

## Off-Schedule Proficiency Testing

Provides laboratories with an option for immediate, on-demand proficiency testing, a complement to the regular scheduled proficiency testing. For more details on this service, see page 16.

## Overview

An essential tool for quality improvement, Proficiency Testing (PT) was originally developed as an educational tool to help laboratories investigate internal procedural problems and to take corrective action to minimize the effect on patient results. Today, PT is the standard of competency most heavily weighed by regulatory inspectors. MLE's Proficiency Testing (PT) program is designed for easy access, simple performance, and clear reporting.

## How MLE Works

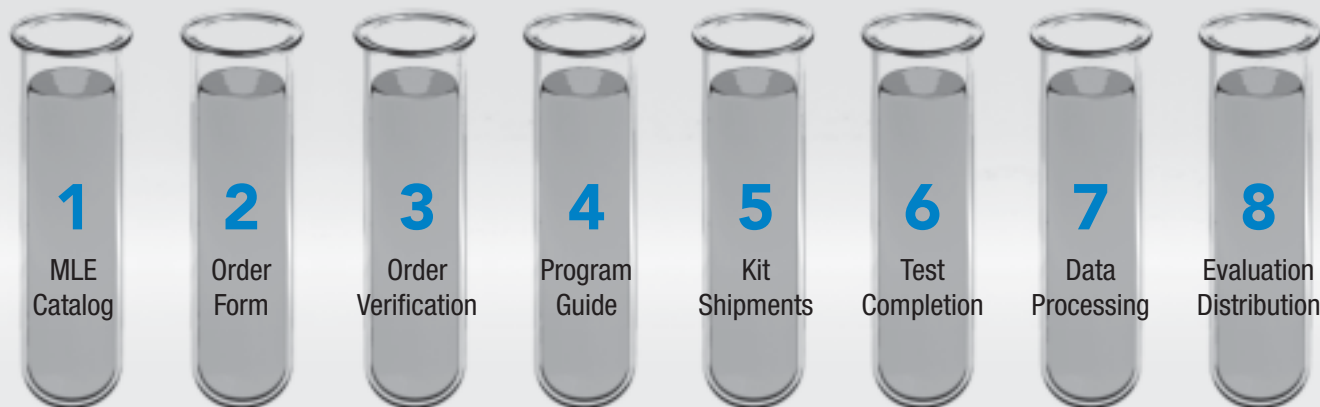
PT is the practice of testing specimens of unknown values sent from an outside source—most commonly, a PT program. After submitting your test results, you receive data comparing your laboratory's performance with that of other labs doing the same procedures with identical or similar methods.

All tests are included in the same shipment.

### Our Guarantee

If a specimen is missing, leaking, broken, not labeled, hemolyzed, or crushed, and you contact us within three (3) working days of receipt of your kit, we will provide a replacement for the specimen(s) FREE of charge (limited to material availability) or your lab will receive a grading exception for that test.

### How MLE Works



**1** MLE sends you a catalog to review program options.

**2** You complete the order form and return it to MLE for processing.

**3** MLE processes your order and sends you an Order Verification for your review and approval.

**4** MLE sends you a program guide to prepare for your first shipment.

**5** MLE sends you scheduled shipments of test kits which include specimens to test in the same way that you regularly test patient specimens.

**6** Upon completion of the testing, you return your test results to MLE for evaluation.

**7** MLE performs statistical compilation of all participants' results.

**8** MLE mails you an evaluation report, graded according to regulatory requirements, comparing your performance with that of other laboratories using similar methods and instruments.

# Test Index

Regulated tests are listed in bold type.

<b>ABO Group</b> .....	6
Acetaminophen .....	12, 13
Acetone .....	12
<b>Affirm VPIII (DNA)</b> .....	9
AFP .....	13
<b>Albumin</b> .....	11, 12, 15
Alcohol, Serum .....	12
<b>Alkaline Phosphatase</b> .....	11, 12, 15
Allergy Testing .....	10
<b>ALT (SGPT)</b> .....	11, 12, 15
Amikacin .....	12
Ammonia .....	12
<b>Amylase</b> .....	11, 12, 15
<b>Antibody Detection</b> .....	6
Anti-DsDNA .....	10
<b>Anti-HBc</b> .....	11
<b>Anti-HIV</b> .....	11
Anti-RNP .....	10
Anti-Sm .....	10
Anti-SSA .....	10
Anti-SSB .....	10
<b>Anti-Streptolysin O (ASO)</b> .....	9
<b>Antibody Identification</b> .....	6
<b>Antimicrobial Susceptibility Testing</b> .....	8
<b>Antinuclear Antibody (ANA)</b> .....	10
Apolipoprotein A1 .....	12
Apolipoprotein B .....	12
<b>AST (SGOT)</b> .....	11, 12, 15
Beta-lactamase Testing .....	8, 9
Beta-2 Microglobulin .....	13
<b>Bilirubin, Total</b> .....	11, 12, 15
Bilirubin, Direct .....	11, 12
<b>Bilirubin, Neonatal</b> .....	12
<b>Blood Cell Identification</b> .....	6
<b>Blood Culture</b> .....	8
<b>Blood Gases</b> .....	13
<b>Blood Smear</b> .....	9
<b>BMP</b> .....	12
BNP .....	12, 13
Buprenorphine .....	13
C-peptide .....	13
CA 125 .....	13
CA 15-3 .....	13
CA 19-9 .....	13
CA 27-29 .....	13
<b>Calcium</b> .....	11, 12, 15
Calcium, Ionized .....	12, 13
Candida, Affirm VPIII(DNA) .....	9
<b>Carbamazepine</b> .....	12
<b>Cardiac panel/markers</b> .....	12
<b>CBC</b> .....	5
CEA .....	13
<b>C. difficile</b> .....	9
<b>Chlamydia (EIA/DNA)</b> .....	9

<b>Chloride</b> .....	11-13, 15
<b>Cholesterol, Total</b> .....	11, 12, 15
<b>Cholesterol, HDL</b> .....	11, 12, 15
Cholesterol, LDL .....	11, 12
<b>CK-MB</b> .....	13
<b>CMP</b> .....	12
CO <sub>2</sub> .....	11, 12, 15
Colony Count .....	8
<b>Compatibility Testing</b> .....	6
<b>Complement C3</b> .....	10
<b>Complement C4</b> .....	10
<b>Cortisol</b> .....	12
C-Reactive Protein (CRP) .....	10
C-Reactive Protein, high sensitivity (HS-CRP) .....	10
<b>Creatine Kinase (CK)</b> .....	11
<b>Creatinine, Serum</b> .....	11, 12, 15
<b>Creatinine, Urine</b> .....	7, 15
<b>Crossmatch</b> .....	6
<b>Cryptosporidium, Antigen Detection</b> .....	9
Crystal Screening .....	6
<b>CSF Culture</b> .....	8
<b>Culture</b> .....	8, 9
D-Dimer .....	12
Dermatophyte Screen .....	9
<b>Differential, Automated</b> .....	5
<b>Digoxin</b> .....	12
Drug Screen, Urine .....	13
Eosinophils Nasal (PPM) .....	7, 14, 16
Estradiol .....	13
Fecal Leukocytes (PPM) .....	7, 16
Fecal Occult Blood .....	7, 15
<b>Fecal Suspension</b> .....	9
Fern Testing .....	7, 14
Ferritin .....	13
<b>Fibrinogen</b> .....	6
Fluid Cell Count .....	6
Folate .....	13
Fructosamine .....	13
FSH .....	13
<b>Gardnerella, Affirm VPIII (DNA)</b> .....	9
<b>GC Culture</b> .....	8, 9
<b>GC (EIA/DNA)</b> .....	9
<b>Gentamicin</b> .....	12
<b>Genital Culture</b> .....	8
GGT .....	11, 15
<b>Giardia lamblia, Antigen Detection</b> .....	9
<b>Glucose</b> .....	5, 11-15
Glucose, waived methods .....	5, 11, 15
Glucose, whole blood .....	13, 15
Glycohemoglobin .....	13, 15
<b>Gram stain</b> .....	8, 9
HAV .....	11
<b>HbeAg</b> .....	11
HbsAb .....	11
<b>HbsAg</b> .....	11
<b>hCG, serum</b> .....	13
hCG, urine (waived methods) .....	7, 15
HCV .....	11
<b>HDL Cholesterol</b> .....	11, 12, 15
<b>Hematocrit</b> .....	5, 12, 14
Hematocrit, waived methods .....	5, 14

<b>Hemoglobin</b> .....	<b>5, 12-15</b>	Provider-Performed Microscopy (PPM) .....	7, 14, 16
Hemoglobin, waived methods .....	5, 13-15	PSA, Total .....	13
Hemoglobin A1C (Glycohemoglobin) .....	13, 15	PSA, Free .....	13
<b>Hepatic Profile</b> .....	<b>12</b>	<b>PVA Slide</b> .....	<b>9</b>
Homocysteine .....	13	<b>QBC Hematology</b> .....	<b>5</b>
<i>H. pylori</i> , Antibody Detection .....	11, 15	<b>RBC</b> .....	<b>5</b>
<b>i-STAT Chemistry</b> .....	<b>12</b>	<b>Respiratory Culture</b> .....	<b>8</b>
<b>IgA, Total</b> .....	<b>10</b>	Reticulocyte Count .....	6
<b>IgE, Total</b> .....	<b>10</b>	<b>Rheumatoid Factor (RA)</b> .....	<b>9, 10</b>
<b>IgG, Total</b> .....	<b>10</b>	<b>Rh Factor (D Type)</b> .....	<b>6</b>
<b>IgM, Total</b> .....	<b>10</b>	<b>Rotavirus, Antigen Detection</b> .....	<b>9</b>
<b>Immunoglobulins</b> .....	<b>10</b>	<b>RSV, Antigen Detection</b> .....	<b>9, 15</b>
<b>Infectious Mononucleosis</b> .....	<b>9, 10</b>	waived methods .....	9, 15
waived methods .....	10, 15	<b>Rubella</b> .....	<b>10</b>
<b>Influenza A, Antigen Detection</b> .....	<b>9</b>	Salicylate .....	12
waived methods .....	9, 15	Sedimentation Rate .....	6, 14
<b>Influenza B, Antigen Detection</b> .....	<b>9</b>	<b>Sodium</b> .....	<b>11-13, 15</b>
waived methods .....	9, 15	Sperm (PPM) .....	7, 14, 16
<b>Influenza A/B Combo, Antigen Detection</b> .....	<b>9</b>	<b>Stool Culture</b> .....	<b>8</b>
waived methods .....	9, 15	<b>Stool, Parasitology</b> .....	<b>9</b>
Insulin .....	13	<b>Strep A, Antigen Detection</b> .....	<b>8</b>
<b>Iron</b> .....	<b>11</b>	waived methods .....	8, 15
KOH Vaginal Prep (PPM) .....	7, 14, 16	<b>Strep pneumoniae, Antigen Detection</b> .....	<b>9</b>
KOH Skin Prep (Slides) .....	7, 9, 16	<b>Syphilis Serology</b> .....	<b>10</b>
<b>LDH</b> .....	<b>11</b>	T3, Free .....	12
LDL Cholesterol .....	11, 12	<b>T3, Total</b> .....	<b>12</b>
<b>Legionella, Antigen Detection</b> .....	<b>9</b>	<b>T3, Uptake</b> .....	<b>12</b>
LH .....	13	<b>T4, Free</b> .....	<b>12</b>
Lipase .....	11	<b>T4, Total</b> .....	<b>12</b>
<b>Lipid Profile</b> .....	<b>12</b>	<b>Tear IgE</b> .....	<b>10</b>
<b>Lithium</b> .....	<b>12</b>	Tear Lactoferrin .....	10
Lyme Disease Serology .....	10	Testosterone .....	13
<b>Magnesium</b> .....	<b>11</b>	<b>Theophylline</b> .....	<b>12</b>
Microalbumin, quantitative .....	7, 15	<b>Throat Culture</b> .....	<b>8</b>
Microalbumin, urine dipstick .....	7, 15	Thyroglobulin .....	13
Morphine .....	13	<b>Thyroid Profile</b> .....	<b>12</b>
<b>MRSA Screening</b> .....	<b>9</b>	TIBC .....	11
Mycoplasma, IgG .....	11	Transferrin .....	13
Myoglobin .....	12	Trichomonas, Affirm VPIII (DNA) .....	9
Nasal Eosinophils (PPM) .....	7, 14, 16	<b>Triglyceride</b> .....	<b>11, 12, 15</b>
NT-pro BNP .....	13	Troponin I .....	12
Occult Blood, Fecal .....	7, 15	Troponin T .....	12
Oxycodone .....	13	<b>TSH</b> .....	<b>12</b>
<b>Parasitology</b> .....	<b>9</b>	<b>Tumor Markers</b> .....	<b>13</b>
Parathyroid hormone (PTH) .....	13	<b>Urea Nitrogen (BUN)</b> .....	<b>11, 12, 15</b>
<b>Partial Thromboplastin Time (APTT) or (PTT)</b> .....	<b>6</b>	<b>Uric Acid</b> .....	<b>11, 15</b>
<b>pCO<sub>2</sub></b> .....	<b>13</b>	<b>Urine Culture</b> .....	<b>8, 9</b>
<b>pH</b> .....	<b>13</b>	Urine Dipstick .....	7, 15
<b>Phenobarbitol</b> .....	<b>12</b>	Urine Drug Screen .....	13
<b>Phenytoin</b> .....	<b>12</b>	Urine hCG, waived methods .....	7, 15
Phosphorus .....	11	<b>Urine, Presumptive Identification</b> .....	<b>8</b>
Pinworms (PPM) .....	7, 14, 16	Urine Sediment Identification .....	7, 14, 16
<b>Platelet Count</b> .....	<b>5</b>	<b>Valproic Acid</b> .....	<b>12</b>
<b>pO<sub>2</sub></b> .....	<b>13</b>	Vancomycin .....	12
<b>Potassium</b> .....	<b>11-13</b>	<b>Viral Markers</b> .....	<b>11</b>
Progesterone .....	13	Vitamin B12 .....	13
Prolactin .....	13	<b>WBC</b> .....	<b>5</b>
<b>Protein, Total</b> .....	<b>11, 12, 15</b>	Waived and PPM package .....	7, 14
<b>Prothrombin Time (PT)</b> .....	<b>6, 14, 15</b>	Waived Test Menu .....	14
<b>whole blood methods (non-waived)</b> .....	<b>6</b>	Wet Mount Preparations (PPM) .....	7, 14, 16
waived methods .....	6, 14, 15	<b>Wound Culture</b> .....	<b>8</b>

## MLE Proficiency Testing Price List

Code/Description	*Full Year	Code/Description	*Full Year	Code/Description	*Full Year
<b>HEMATOLOGY</b>					
210/Hematology	\$168	644/Urine Culture/Strep Antigen	\$237	<b>NEW!</b> 782/ANA Expanded	\$201
211/Basic Hematology	\$156	645/Urine/Throat Culture	\$237	<b>NEW!</b> 783/ANA Expanded <b>A</b>	\$144
212/Hemoglobin/Hematocrit	\$135	646/GC Culture	\$237	<b>CHEMISTRY</b>	
213/Hemoglobin/Hematocrit <b>W</b>	\$108	647/Urine Culture/Presump.ID/CC	\$276	810/Chemistry	\$288
215/Hemoglobin/Glucose—HemoCue	\$123	648/Colony Count	\$177	811/Cholestech <b>W</b> Chemistry	\$141
223/Abbott 5-Part Diff	\$273	649/Presump.ID/CC/Strep A Antigen	\$261	812/Piccolo Waived Chemistry	\$177
224/Sysmex 3-Part Diff	\$201	650/Gram Stain	\$147	813/Comp. Metabolic Panel	\$219
225/Hematology 3-Part Diff	\$201	652/Throat Culture/Urine Presump ID	\$276	814/Basic Metabolic Panel	\$168
226/Hematology 5-Part Diff	\$273	654/GC Culture <b>A</b>	\$93	815/Hepatic Profile	\$189
227/QBC Hematology	\$273	660/Strep A Antigen Detection	\$138	816/Hepatic Profile <b>A</b>	\$36
228/Hematology 5-Part diff- ACT 5 & Pentra 60C+	\$273	662/Strep A Antigen <b>W</b>	\$81	817/i-STAT Chemistry 1	\$336
<b>NEW!</b> 229/Hematology 5-Part diff-Sysmex XE/XT	\$273	668/Affirm VP Antigen Testing	\$351	818/i-STAT Chemistry 2	\$198
230/Blood Cell Id <b>A</b>	\$27	670/Chlamydia (EIA, DNA)	\$267	819/Chemistry 1	\$165
231/Blood Cell Id—stand alone	\$87	673/Chlamydia <b>A</b>	\$111	820/Chemistry 2	\$195
240/Reticulocyte Count	\$177	675/Chlamydia/GC (EIA, DNA )	\$291	821/Chemistry 3	\$225
247/Sed Rate	\$138	678/Dermatophyte Screen	\$150	822/Add'l Chemistry	\$36
<b>NEW!</b> 248/Sed Rate-Sedimat15	\$138	680/Rapid Antigen Det I <b>W</b>	\$153	823/Enzyme Chemistry	\$36
250/Body Fluid/Cell Count	\$135	681/Rapid Antigen Detection I	\$246	824/Thyroid Profile	\$201
<b>COAGULATION</b>					
320/Coagulation	\$147	682/Rapid Antigen Detection II	\$216	825/Thyroid Profile <b>A</b>	\$45
321/Prothrombin Time	\$138	683/Giardia lamblia/ Cryptosporidium Ag Det	\$198	826/Lipid Profile	\$195
325/CoaguChek S Prottime	\$186	686/Legionella Antigen Detection	\$153	827/Lipid Profile <b>A</b>	\$36
327/CoaguChek S Prottime <b>W</b>	\$123	687/Strep Pneumoniae Antigen Det.	\$153	829/Apolipoproteins	\$105
328/i-STAT Prottime	\$210	690/Parasitology	\$198	830/TDM	\$195
329/ITC Prottime <b>W</b>	\$123	<b>NEW!</b> 695/MRSA Screen	\$237	831/TDM <b>A</b>	\$45
<b>NEW!</b> 330/CoaguChek XS	\$186	<b>IMMUNOLOGY</b>			
<b>BLOOD BANK</b>					
451/ABO & Rh Factor (D Type)	\$261	750/Immunology	\$225	<b>NEW!</b> 835/Serum Alcohol/Acetone	\$198
452/Blood Bank I	\$522	751/Rheumatology – NOT HIGH SENSITIVITY	\$153	<b>NEW!</b> 836/Ammonia	\$132
453/Blood Bank II	\$540	755/Infectious Mono <b>W</b>	\$87	841/Neonatal Bilirubin	\$192
<b>URINALYSIS</b>					
530/Urinalysis	\$78	<b>NEW!</b> 756/Tear Lactoferrin	\$105	842/Direct Bilirubin <b>A</b>	\$30
531/Urinalysis Dipstick	\$60	<b>NEW!</b> 757/Tear IgE	\$132	845/Cardiac Markers	\$156
532/Urine Sed Id	\$84	761/Infect Mono/Rheumatoid Factor	\$210	846/BNP	\$177
533/Urine Sed Id <b>A</b>	\$18	762/Infectious Mono	\$147	847/Blood Gases	\$261
534/PPM	\$87	763/Rheumatoid Factor	\$147	848/Biosite Triage Cardiac Panel	\$345
535/PPM <b>A</b>	\$21	764/CRP	\$84	850/Glycohemoglobin	\$135
536/Microalbumin—Quant <b>A</b>	\$69	765/HS-CRP	\$87	<b>NEW!</b> 851/Afinion Glycohemoglobin	\$135
537/Fecal Occult Blood <b>A</b>	\$63	766/ANA LATEX	\$141	855/Fructosamine	\$132
538/KOH Slide	\$111	767/ANA (ELISA/IMMUNO ONLY)	\$141	<b>NEW!</b> 859/PSA <b>A</b>	\$36
539/Microalbumin	\$81	768/Complement C3, C4	\$168	860/Endocrinology/Hematology/ Oncol	\$171
540/Urine hCG <b>A</b>	\$18	769/Immunoglobulins, IgG, IgA, IgM	\$159	861/PSA	\$90
541/Urine hCG—stand alone	\$42	770/Specific Allergen Testing	\$309	862/Tumor Markers	\$348
542/Fecal Occult Blood	\$72	771/Rubella	\$144	863/Endocrinology 2	\$153
<b>MICROBIOLOGY</b>					
630/Bacteriology 1	\$249	772/Syphilis Serology	\$159	865/Serum hCG	\$147
640/Bacteriology 2	\$240	773/Diagnostic Allergy	\$309	866/Serum hCG <b>A</b>	\$72
641/Throat Culture	\$237	774/Lyme Disease Serology	\$195	868/Urine Drug Screening—Qual	\$165
642/Throat Culture/Strep A Antigen	\$237	775/Viral Markers	\$339	870/Whole Blood Glucose	\$228
643/Urine Culture	\$237	776/CRP <b>A</b> NOT HIGH SENSITIVITY	\$45	871/Whole Blood Glucose <b>W</b>	\$129
		777/HS-CRP <b>A</b>	\$48	880/Add'l Chem Testing Material	\$90
		778/ANA <b>A</b> (LATEX ONLY)	\$87	901/Waived and PPM Package	\$183
		779/ANA <b>A</b> (ELISA/IMMUNO ONLY)	\$87	100/Annual Fee (Includes Binder)	\$75
		780/H. pylori Antibody Det	\$129	<b>LAB SUPPLIES</b>	
		781/Mycoplasma Antibody	\$111	121/1mL Pipette	\$15
				126/Pipette Pump	\$21

**W**=Waived • **A**=Add-On • \*Enroll after the 1st event and prices are prorated by 1/3 per event.

# 2009 MLE PT Order Form

1  New Enrollee  
 Re-Enrolling Participant: MLE ID # \_\_\_\_\_

2 Bill To: (please print or type)

Contact \_\_\_\_\_  
 Facility Name \_\_\_\_\_  
 Address \_\_\_\_\_  
 \_\_\_\_\_  
 City \_\_\_\_\_ State \_\_\_\_\_ Zip \_\_\_\_\_  
 Country (other than U.S.) \_\_\_\_\_  
 Phone \_\_\_\_\_ Fax \_\_\_\_\_  
 E-mail \_\_\_\_\_

3 Lab Director \_\_\_\_\_

4 CLIA ID # \_\_\_\_\_

5 Ship To: (no PO boxes for kit delivery)

Same as "bill to" address.  
 Contact \_\_\_\_\_  
 Facility Name \_\_\_\_\_  
 Address \_\_\_\_\_  
 \_\_\_\_\_  
 City \_\_\_\_\_ State \_\_\_\_\_ Zip \_\_\_\_\_  
 Country (other than U.S.): \_\_\_\_\_  
 Phone \_\_\_\_\_ Fax \_\_\_\_\_  
 E-mail: \_\_\_\_\_

Ship kit to different address (attach information)

6 Send a copy of my proficiency testing results to:

CMS  COLA-ID # \_\_\_\_\_  
 State Agency-ID # \_\_\_\_\_  
 Other (attach name, address and phone number)

**Activate Auto Renewal at no charge.**  
 (see next page for details)

Quantity	Module #	Description	Price	Ext.	Quantity	Module #	Description	Price	Ext.
2	210	Hematology Module	\$168	\$336					

Please note: Cancel a module IN WRITING up to 4 weeks prior to the upcoming shipment to avoid being

The MLE products you have ordered may contain pathogenic material. By returning this order form, you assume all risk and responsibility in connection with the receipt, handling, storage, use, and disposal of the material.

FOR MLE USE ONLY

8 Method of Payment

(Tax ID # 23-1520302)

Check (payable to ACP/MLE)

US funds drawn on US bank disclosure

Purchase Order # \_\_\_\_\_

Send Invoice  Charge to:  VISA  MasterCard

Card # \_\_\_\_\_

Exp. \_\_\_\_\_

Name \_\_\_\_\_

Signature \_\_\_\_\_

Mailing the Order Form/Renewal Form

WITH check:

R0800  
 ACP/MLE  
 PO Box 7777  
 Philadelphia, PA 19175-0800

WITHOUT check:

Medical Laboratory Evaluation  
 Suite 700  
 25 Massachusetts Avenue, NW  
 Washington, DC 20001-7401

9 Amount Due

Total Cost of Items Above= \$ \_\_\_\_\_

-Less Eligible Discount  
 (Offers CANNOT be combined) = \$ \_\_\_\_\_

1- MLE + ACP Membership - SAVE \$75

ACP Member No. \_\_\_\_\_

2- NEW MLE + COLA Member - SAVE \$75

3- NEW COLA, MLE, ACP Member - SAVE \$75 + 10%

ACP Member No. \_\_\_\_\_

4- Multi-Site Organization - SAVE 10%

5- Consultant-SAVE 10%

8- Federal Agency - SAVE 15%-25%

9- Recruit 1, Waive 2 - SAVE \$75

Referring lab's MLE ID # \_\_\_\_\_

13- Former MLE Participant - SAVE 10%

ADV9-1 - SAVE \$75

ADV9-2 - SAVE \$75

ADV9-3 - SAVE \$75

ADV9-4 - SAVE \$75

ADV9-5 - SAVE \$75

ADV9-6 - SAVE \$75

ADV9-7 - SAVE \$75

ADV9-8 - SAVE \$75

+Annual Administration Fee  
 (\$75, if no discount applies) \$ \_\_\_\_\_

Total Amount Due = \$ \_\_\_\_\_

**FAX this form to: 202-835-0440**  
**(call 1-800-338-2746, option 5,**  
**to confirm receipt of fax)**