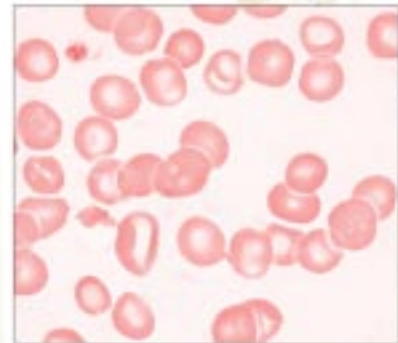




2009 Catalog and Information Guide for Proficiency Testing

**Improving Quality Care Through
Accurate Diagnostic Testing**



A Service of
The American College of Physicians

What's New

Expanded Online Options

- Evaluation Reports—includes historical reports from 2006 to the present
- Improved Results Reporting—take a second look! See Page 17.
- Participant Summaries—print only certain pages or the entire document
- Enrollment
- Renew by using the online enrollment form
- Program Forms

At-a-Glance Hematology Table

See page 5 for assistance in selecting the correct module for your 5-part differential instrument.

Continuing Education—CEexpress

New CEexpress Courses:

- MLE CEexpress 5: Urine Culture Basics
- MLE CEexpress 6: Evaluating Red Blood Cells
- MLE CEexpress 7: Personnel Training and Competency Assessment

Educational Resources

Look for an all-inclusive “Educational Resource” catalog in coming weeks.

New Modules

HEMATOLOGY

- Hematology with 5-part Differential (module 229). See page 5.
- Sedimat 15 ESR (module 248). See page 6.

COAGULATION

- CoaguChek XS Plus Prothrombin Time (module 330). See page 6.

IMMUNOLOGY

- Tear Lactoferrin (module 756). See page 10.
- Tear IgE (module 757). See page 10.
- ANA Expanded (module 782). See page 10.
- ANA Expanded—Add-On (module 783). See page 10.

CHEMISTRY

- Serum Alcohol and Acetone (module 835). See page 12.
- Ammonia (module 836). See page 12.
- Afinion Glycohemoglobin (module 851). See page 13.
- PSA—Add-On (module 859). See page 13.

MICROBIOLOGY

- MRSA Screen (module 695). See page 9.

Modules No Longer Available

CHEMISTRY

- Theophylline (module 832)
- Theophylline—Add-on (module 833)

Revised Modules

HEMATOLOGY

See Table on page 5

- Hematology with 5-part differential (module 226)—Now only for Beckman-Coulter instruments.
- Hematology with 5-part differential (module 223)—Now includes all Abbott instruments.

PPM

- Provider-Performed Microscopy (module 534). Includes Fern testing. See Page 7.

CHEMISTRY

- Chemistry Module (module 810)—Now includes Direct Bilirubin-module 842. See page 11.
- Piccolo Waived Chemistry (module 812). See page 11.
New Analytes: Chloride, CO₂, Potassium, Sodium
- Enzyme Chemistry—Add-On (module 823). See page 11.
Dropped Analyte: Acid Phosphatase
- i-STAT Chemistry (module 817 and 818). See page 12.
New Analyte: Ionized Calcium
- Direct Bilirubin (module 842). Now included in the Chemistry Module 810. See page 12.
- Endocrinology/Hematology/Oncology (module 860). See page 13.
New Analyte: Transferrin
Dropped Analyte: PAP
- PSA (module 861). Name change. See page 13.
Dropped Analyte: PAP
- Urine Drug Screen (module 868). See page 13.
New Analytes: Acetaminophen
Buprenorphine
Morphine
Oxycodone

MICROBIOLOGY

- Bacteriology 1 (module 630)—Now contains 6 culture specimens. See page 8.

Provider-Performed Microscopy (PPM)

532 Urine Sediment Identification\$84

Two challenges consisting of color photographs.

534 Provider-Performed Microscopy (PPM)\$87

Color photographs depicting microscopic fields for the examination of Vaginal Wet Mount Preparations, Vaginal KOH Preparations, Nasal Eosinophils, Fecal Leukocytes, Pinworms, Sperm, and FERN testing.

Urine sediment identification not included.

Six challenges.

538 KOH Slides\$111

Two fixed glass slides for determining the presence or absence of fungal elements in skin scrapings.

Two challenges.

Lab Supplies & Services

Supplies

121 Pipette-1mL\$15

For use with 320, 321, 680, 681. Reusable Class A volumetric pipette required for reconstitution of proficiency testing specimens.

126 Pipette Pump\$21

For use with product 121 above.

Services

107 Hard Copy of Participant Summary for the Year ..\$15

108 Additional Program Binder\$15

116 Automatic Program RenewalFREE

Free yourself from re-enrollment/re-ordering hassles. We'll do it for you! See inside back cover for details.

"E-Notify"

Notification of newly waived tests and FDA Recalls delivered to your e-mail accountFREE

To sign up for "E-Notify," send an e-mail to mle@acponline.org.

Web Data Entry System (WDES)

Online Result Reporting ProgramFREE

To register or receive more information, send an e-mail to ptwebsupport@acponline.org. See next page.

Off-Schedule Proficiency Testing

Off-schedule proficiency testing (PT) provides laboratories with immediate, on-demand, customized proficiency testing for reinstatement or remedial purposes; a complement to the regularly scheduled PT program.

Off-Schedule Testing—starts at\$200

Who Needs Off-Schedule Testing?

- Laboratories with unsuccessful performance (score of less than 80%) for two out of three regular testing events may be required to perform off-schedule PT to lift a "cease-testing" order from their regulatory or accrediting agency. In these cases, two acceptable proficiency performances (score of 80% or better) may be required for the lab to resume testing patients.
- Some laboratories use off-schedule PT to verify that corrective actions were effective.

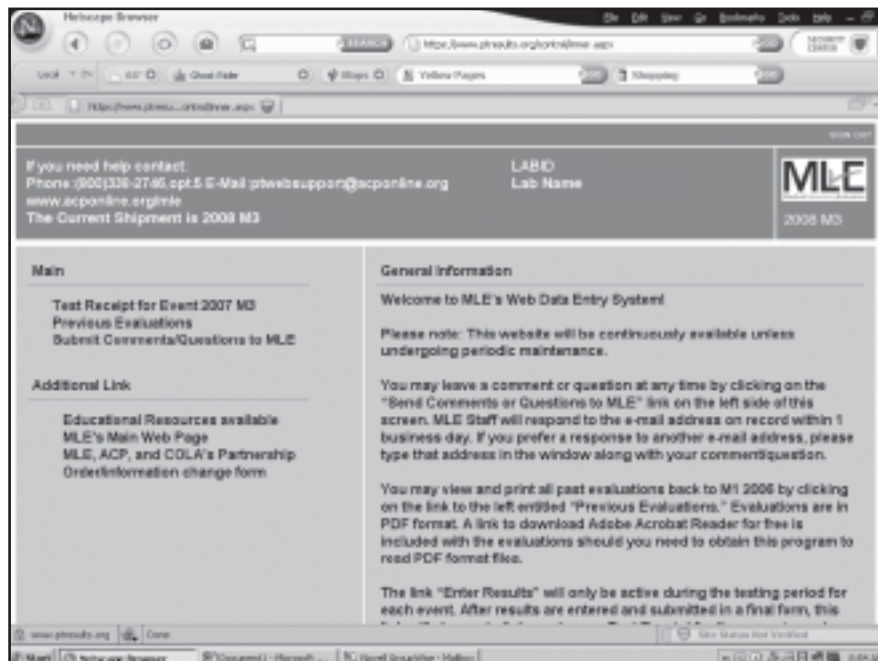
This service is available to every laboratory, regardless of MLE enrollment status.

For information on cost and availability, contact MLE Customer Service at 800-338-2746, option 5, or e-mail us at mle@acponline.org.

WDES— It's a Whole New Ball Game!



If you have tried it in the past,
take another look.



MLE's Online Result Reporting Program—New and improved! You will LOVE the significantly enhanced, “user-friendly,” intuitive program, complete with:

- Access to evaluation results (historical—from 2006 to the present)
- Links to the Participant Summaries, Test Result Form Booklet, and other valuable information.

What are you waiting for?

Register for the next event by sending an e-mail request to
ptwebsupport@acponline.org

MLE Proficiency Testing Price List

Code/Description	*Full Year	Code/Description	*Full Year	Code/Description	*Full Year
HEMATOLOGY					
210/Hematology	\$168	644/Urine Culture/Strep Antigen	\$237	NEW! 782/ANA Expanded	\$201
211/Basic Hematology	\$156	645/Urine/Throat Culture	\$237	NEW! 783/ANA Expanded A	\$144
212/Hemoglobin/Hematocrit	\$135	646/GC Culture	\$237	CHEMISTRY	
213/Hemoglobin/Hematocrit W	\$108	647/Urine Culture/Presump.ID/CC	\$276	810/Chemistry	\$288
215/Hemoglobin/Glucose—HemoCue	\$123	648/Colony Count	\$177	811/Cholestech W Chemistry	\$141
223/Abbott 5-Part Diff	\$273	649/Presump.ID/CC/Strep A Antigen	\$261	812/Piccolo Waived Chemistry	\$177
224/Sysmex 3-Part Diff	\$201	650/Gram Stain	\$147	813/Comp. Metabolic Panel	\$219
225/Hematology 3-Part Diff	\$201	652/Throat Culture/Urine Presump ID	\$276	814/Basic Metabolic Panel	\$168
226/Hematology 5-Part Diff	\$273	654/GC Culture A	\$93	815/Hepatic Profile	\$189
227/QBC Hematology	\$273	660/Strep A Antigen Detection	\$138	816/Hepatic Profile A	\$36
228/Hematology 5-Part diff- ACT 5 & Pentra 60C+	\$273	662/Strep A Antigen W	\$81	817/i-STAT Chemistry 1	\$336
NEW! 229/Hematology 5-Part diff-Sysmex XE/XT	\$273	668/Affirm VP Antigen Testing	\$351	818/i-STAT Chemistry 2	\$198
230/Blood Cell Id A	\$27	670/Chlamydia (EIA, DNA)	\$267	819/Chemistry 1	\$165
231/Blood Cell Id—stand alone	\$87	673/Chlamydia A	\$111	820/Chemistry 2	\$195
240/Reticulocyte Count	\$177	675/Chlamydia/GC (EIA, DNA)	\$291	821/Chemistry 3	\$225
247/Sed Rate	\$138	678/Dermatophyte Screen	\$150	822/Add'l Chemistry	\$36
NEW! 248/Sed Rate-Sedimat15	\$138	680/Rapid Antigen Det I W	\$153	823/Enzyme Chemistry	\$36
250/Body Fluid/Cell Count	\$135	681/Rapid Antigen Detection I	\$246	824/Thyroid Profile	\$201
COAGULATION					
320/Coagulation	\$147	682/Rapid Antigen Detection II	\$216	825/Thyroid Profile A	\$45
321/Prothrombin Time	\$138	683/Giardia lamblia/ Cryptosporidium Ag Det	\$198	826/Lipid Profile	\$195
325/CoaguChek S Prottime	\$186	686/Legionella Antigen Detection	\$153	827/Lipid Profile A	\$36
327/CoaguChek S Prottime W	\$123	687/Strep Pneumoniae Antigen Det.	\$153	829/Apolipoproteins	\$105
328/i-STAT Prottime	\$210	690/Parasitology	\$198	830/TDM	\$195
329/ITC Prottime W	\$123	NEW! 695/MRSA Screen	\$237	831/TDM A	\$45
NEW! 330/CoaguChek XS	\$186	IMMUNOLOGY			
BLOOD BANK					
451/ABO & Rh Factor (D Type)	\$261	750/Immunology	\$225	NEW! 835/Serum Alcohol/Acetone	\$198
452/Blood Bank I	\$522	751/Rheumatology – NOT HIGH SENSITIVITY	\$153	NEW! 836/Ammonia	\$132
453/Blood Bank II	\$540	755/Infectious Mono W	\$87	841/Neonatal Bilirubin	\$192
URINALYSIS					
530/Urinalysis	\$78	NEW! 756/Tear Lactoferrin	\$105	842/Direct Bilirubin A	\$30
531/Urinalysis Dipstick	\$60	NEW! 757/Tear IgE	\$132	845/Cardiac Markers	\$156
532/Urine Sed Id	\$84	761/Infect Mono/Rheumatoid Factor	\$210	846/BNP	\$177
533/Urine Sed Id A	\$18	762/Infectious Mono	\$147	847/Blood Gases	\$261
534/PPM	\$87	763/Rheumatoid Factor	\$147	848/Biosite Triage Cardiac Panel	\$345
535/PPM A	\$21	764/CRP	\$84	850/Glycohemoglobin	\$135
536/Microalbumin—Quant A	\$69	765/HS-CRP	\$87	NEW! 851/Afinion Glycohemoglobin	\$135
537/Fecal Occult Blood A	\$63	766/ANA LATEX	\$141	855/Fructosamine	\$132
538/KOH Slide	\$111	767/ANA (ELISA/IMMUNO ONLY)	\$141	NEW! 859/PSA A	\$36
539/Microalbumin	\$81	768/Complement C3, C4	\$168	860/Endocrinology/Hematology/ Oncol	\$171
540/Urine hCG A	\$18	769/Immunoglobulins, IgG, IgA, IgM	\$159	861/PSA	\$90
541/Urine hCG—stand alone	\$42	770/Specific Allergen Testing	\$309	862/Tumor Markers	\$348
542/Fecal Occult Blood	\$72	771/Rubella	\$144	863/Endocrinology 2	\$153
MICROBIOLOGY					
630/Bacteriology 1	\$249	772/Syphilis Serology	\$159	865/Serum hCG	\$147
640/Bacteriology 2	\$240	773/Diagnostic Allergy	\$309	866/Serum hCG A	\$72
641/Throat Culture	\$237	774/Lyme Disease Serology	\$195	868/Urine Drug Screening—Qual	\$165
642/Throat Culture/Strep A Antigen	\$237	775/Viral Markers	\$339	870/Whole Blood Glucose	\$228
643/Urine Culture	\$237	776/CRP A NOT HIGH SENSITIVITY	\$45	871/Whole Blood Glucose W	\$129
		777/HS-CRP A	\$48	880/Add'l Chem Testing Material	\$90
		778/ANA A (LATEX ONLY)	\$87	901/Waived and PPM Package	\$183
		779/ANA A (ELISA/IMMUNO ONLY)	\$87	100/Annual Fee (Includes Binder)	\$75
		780/H. pylori Antibody Det	\$129	LAB SUPPLIES	
		781/Mycoplasma Antibody	\$111	121/1mL Pipette	\$15
				126/Pipette Pump	\$21

W=Waived • **A**=Add-On • *Enroll after the 1st event and prices are prorated by 1/3 per event.

2009 MLE PT Order Form

1 New Enrollee
 Re-Enrolling Participant: MLE ID # _____

2 **Bill To:** (please print or type)

Contact _____
 Facility Name _____
 Address _____

 City _____ State _____ Zip _____
 Country (other than U.S.) _____
 Phone _____ Fax _____
 E-mail _____

3 **Lab Director** _____

4 **CLIA ID #** _____

5 **Ship To:** (no PO boxes for kit delivery)

Same as "bill to" address.
 Contact _____
 Facility Name _____
 Address _____

 City _____ State _____ Zip _____
 Country (other than U.S.): _____
 Phone _____ Fax _____
 E-mail: _____

Ship kit to different address (attach information)

6 **Send a copy of my proficiency testing results to:**

CMS COLA-ID # _____
 State Agency-ID # _____
 Other (attach name, address and phone number)

Activate Auto Renewal at no charge.
 (see next page for details)

Quantity	Module #	Description	Price	Ext.	Quantity	Module #	Description	Price	Ext.
2	210	Hematology Module	\$168	\$336					

Please note: Cancel a module IN WRITING up to 4 weeks prior to the upcoming shipment to avoid being

The MLE products you have ordered may contain pathogenic material. By returning this order form, you assume all risk and responsibility in connection with the receipt, handling, storage, use, and disposal of the material.

FOR MLE USE ONLY

8 **Method of Payment**

(Tax ID # 23-1520302)

Check (payable to ACP/MLE)

US funds drawn on US bank disclosure

Purchase Order # _____

Send Invoice Charge to: VISA MasterCard

Card # _____

Exp. _____

Name _____

Signature _____

Mailing the Order Form/Renewal Form

WITH check:

R0800
 ACP/MLE
 PO Box 7777
 Philadelphia, PA 19175-0800

WITHOUT check:

Medical Laboratory Evaluation
 Suite 700
 25 Massachusetts Avenue, NW
 Washington, DC 20001-7401

9 **Amount Due**

Total Cost of Items Above= \$ _____

-Less Eligible Discount
 (Offers CANNOT be combined) = \$ _____

1- MLE + ACP Membership - SAVE \$75

ACP Member No. _____

2- NEW MLE + COLA Member - SAVE \$75

3- NEW COLA, MLE, ACP Member - SAVE \$75 + 10%

ACP Member No. _____

4- Multi-Site Organization - SAVE 10%

5- Consultant-SAVE 10%

8- Federal Agency - SAVE 15%-25%

9- Recruit 1, Waive 2 - SAVE \$75

Referring lab's MLE ID # _____

13- Former MLE Participant - SAVE 10%

ADV9-1 - SAVE \$75

ADV9-2 - SAVE \$75

ADV9-3 - SAVE \$75

ADV9-4 - SAVE \$75

ADV9-5 - SAVE \$75

ADV9-6 - SAVE \$75

ADV9-7 - SAVE \$75

ADV9-8 - SAVE \$75

+Annual Administration Fee (\$75, if no discount applies) \$ _____

Total Amount Due = \$ _____

FAX this form to: 202-835-0440
(call 1-800-338-2746, option 5,
to confirm receipt of fax)