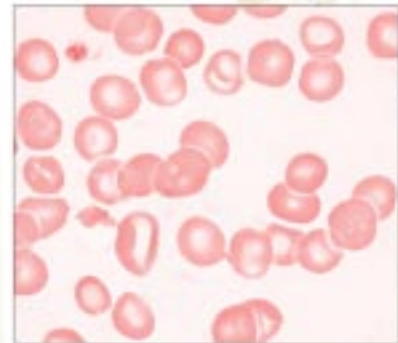




2009 Catalog and Information Guide for Proficiency Testing

**Improving Quality Care Through
Accurate Diagnostic Testing**



A Service of
The American College of Physicians

What's New

Expanded Online Options

- Evaluation Reports—includes historical reports from 2006 to the present
- Improved Results Reporting—take a second look! See Page 17.
- Participant Summaries—print only certain pages or the entire document
- Enrollment
- Renew by using the online enrollment form
- Program Forms

At-a-Glance Hematology Table

See page 5 for assistance in selecting the correct module for your 5-part differential instrument.

Continuing Education—CEexpress

New CEexpress Courses:

- MLE CEexpress 5: Urine Culture Basics
- MLE CEexpress 6: Evaluating Red Blood Cells
- MLE CEexpress 7: Personnel Training and Competency Assessment

Educational Resources

Look for an all-inclusive “Educational Resource” catalog in coming weeks.

New Modules

HEMATOLOGY

- Hematology with 5-part Differential (module 229). See page 5.
- Sedimat 15 ESR (module 248). See page 6.

COAGULATION

- CoaguChek XS Plus Prothrombin Time (module 330). See page 6.

IMMUNOLOGY

- Tear Lactoferrin (module 756). See page 10.
- Tear IgE (module 757). See page 10.
- ANA Expanded (module 782). See page 10.
- ANA Expanded—Add-On (module 783). See page 10.

CHEMISTRY

- Serum Alcohol and Acetone (module 835). See page 12.
- Ammonia (module 836). See page 12.
- Afinion Glycohemoglobin (module 851). See page 13.
- PSA—Add-On (module 859). See page 13.

MICROBIOLOGY

- MRSA Screen (module 695). See page 9.

Modules No Longer Available

CHEMISTRY

- Theophylline (module 832)
- Theophylline—Add-on (module 833)

Revised Modules

HEMATOLOGY

See Table on page 5

- Hematology with 5-part differential (module 226)—Now only for Beckman-Coulter instruments.
- Hematology with 5-part differential (module 223)—Now includes all Abbott instruments.

PPM

- Provider-Performed Microscopy (module 534). Includes Fern testing. See Page 7.

CHEMISTRY

- Chemistry Module (module 810)—Now includes Direct Bilirubin-module 842. See page 11.
- Piccolo Waived Chemistry (module 812). See page 11.
New Analytes: Chloride, CO₂, Potassium, Sodium
- Enzyme Chemistry—Add-On (module 823). See page 11.
Dropped Analyte: Acid Phosphatase
- i-STAT Chemistry (module 817 and 818). See page 12.
New Analyte: Ionized Calcium
- Direct Bilirubin (module 842). Now included in the Chemistry Module 810. See page 12.
- Endocrinology/Hematology/Oncology (module 860). See page 13.
New Analyte: Transferrin
Dropped Analyte: PAP
- PSA (module 861). Name change. See page 13.
Dropped Analyte: PAP
- Urine Drug Screen (module 868). See page 13.
New Analytes: Acetaminophen
Buprenorphine
Morphine
Oxycodone

MICROBIOLOGY

- Bacteriology 1 (module 630)—Now contains 6 culture specimens. See page 8.

MLE Advantage Discounts—Your Solution to Savings Starts Here!

Review the table below to see if you qualify for any of the ADVANTAGE offers. Then, simply check the appropriate ADVANTAGE box and complete any other required information on the online or hard copy PT Order Form.

Already a Valued MLE Participant? Check out ADVANTAGE 1, 3, 4, 5, 8, or 9 to see if you qualify for a discount.

If you received a letter from MLE indicating an **ADV code**, simply check the appropriate Discount box on the bottom of the online or hard copy PT Order Form.

ADVANTAGE Number	Enrollment Status to Qualify	Description	Eligibility Requirements	Savings
1	Current in or New to MLE and ACP	ACP Members	See enrollment status	Annual Administration Fee is waived (\$75 value)
2	New to MLE <i>and</i> current in or new to COLA	COLA Members	See enrollment status	Annual Administration Fee is waived (\$75 value)
3	Current in 2 of the organizations and new to the 3rd organization (see next page)	ACP Members and COLA Members	See enrollment status	Annual Administration Fee is waived (\$75 value) PLUS a 10% discount on the module order
4	Current in or New to MLE	Multi-Sites	Must have 3 or more labs enrolled	10% discount on the module order
5	Current in or New to MLE	Consultant Affiliation	Must indicate an independent consultant	10% discount on the module order
8	Current in or New to MLE	Federal Agencies	See enrollment status	15% discount on the module order—domestic labs. 25% for international labs
9	Current in MLE and enrolling a NEW MLE (see page 20)	Recruit a new lab	Current MLE participant must be enrolled for 2009	Annual Administration Fee is waived (\$75 value) for 2009 for both labs
13	Not enrolled in MLE for 2008	Former MLE Participants	See enrollment status	Annual Administration Fee is waived (\$75 value)


Frequently Asked Questions

Q. I've heard about MLE's fantastic customer service. I want to use MLE as my PT provider but found a service that costs less. Will you match the price so I can benefit from MLE's customer service while staying within my budget?

A. With MLE's Price Matching Analysis, you have a choice! Sometimes budget constraints bind you to a service that may be the least desirable. Every year, MLE participants reenroll because they appreciate the outstanding customer service. Now, you no longer have to choose between the least expensive and the most valuable service. Contact our customer service department and ask for a "Price Matching Analysis" to see if you qualify.

Q. If we are a multisite organization and have an ACP member on staff, do we receive both discounts?

A. Only ONE ADVANTAGE offer is applicable. ADVANTAGE packages cannot be combined. If you qualify for more than one package, please select the one that provides you with the greatest savings. Note: If you have a consultant or multisite discount, we will assume that the consultant or multisite coordinator has final decision-making authority about the selection of the ADVANTAGE discount for your lab, unless we are notified otherwise.



The Lab Alliance gives ACP Members Buying Power. And the Tools to Improve the Quality of Patient Care.

Use the ACP. COLA. MLE Lab Alliance to ensure the quality of your lab while realizing savings via Alliance discounts.

ACP and ACP's Proficiency Testing Program, Medical Laboratory Evaluation (MLE), have joined with COLA, a national healthcare accreditation and e-Learning organization, to bring you a true "one source" resource for Internists.

We know the many challenges you face and we are committed to giving you and your staff the highest quality resources at attractive prices.

LAB ALLIANCE BENEFITS:

- MLE will waive the annual administration fee (\$75.00 value) on its proficiency testing service
- ACP/MLE members save up to 15% by choosing COLA's highly respected laboratory accreditation in lieu of CMS
- COLA covers any switching fees
- COLA offers savings of 15% for ACP/MLE members on COLA's LabUniversity e-Learning courses and educational publications
- Lab Alliance offers free of charge an e-Learning course on Quality Assessment Basics and MLE CEexpress articles

To take advantage of all the benefits that the

MLE's Recruit 1, Waive 2 Program

Help increase peer group participation—recommend MLE Enrollment to your colleagues!

To provide you with larger peer groups, we must work together. MLE is the best-kept secret in quality improvement. Spread the word about us while helping your colleagues receive the same high-quality service at a competitive price!

Benefit:

What You Receive

- Recruit ONE colleague and your administration fee (\$75 value) is waived for 2009.

What Your Colleague Will Receive

- Your colleague's administration fee (\$75 value) is waived for 2009.

Note: The new enrollee cannot combine MLE Discount offers for the 2009 program.

To be considered a recruited enrollee:

- You must be a nonparticipant of MLE during the 2008 year or totally new to MLE.
- Complete a module order for \$100.00 or more.
- Submit an MLE PT Order Form. The waiver will not be applied until your recruiter's renewal is activated.
- **IMPORTANT!** Write the name and MLEID Number of the recruiter in the recruiter box in Section 9 on the PT Order Form.

As the recruiter:

- Submit your MLE Renewal within 2 weeks of your colleague's order submission.
- **IMPORTANT!** Write the name and phone number of your colleague in the designated area on your renewal.

To maintain waiver:

- Remain enrolled throughout the eligible program year.
- The fee waiver for you and your colleague will not be applied until we receive enrollment on both labs.

Tips

Send a recruitment e-mail or fax to a colleague. Request an MLE PT Order Form or sample recruitment fax or e-mail message from MLE Customer Service by calling 1-800-338-2746, option 5, or by e-mailing us at mle@acponline.org.

Attention Automatic Renewal Participants

As an Auto Renewal participant, you do not receive a renewal form or renewal fax reminder. Therefore, simply be sure your colleague writes your name and MLE ID number on his or her order form. Once the forms are processed, we will apply the waiver to your record as well as to the newly enrolled lab.

Note: If you will be receiving an ADVANTAGE discount for the 2009 program and you are participating in "Recruit 1, Waive 2," you are ineligible to apply BOTH discounts to your order. Select the offer that provides the greatest discount. Your newly enrolled colleague will receive the administration fee waiver.

Recruit 1, Waive 2 Request for More Information

FAX this page to MLE (202) 835-0440

RECRUIT 1, WAIVE 2

Your Name _____

Phone _____

MLEID _____

Date _____

Send me a sample e-mail message and fax and I will send it to my colleague.

My e-mail/fax _____

**A collective effort makes the difference.
Call on the support of your colleagues today.**

MLE Proficiency Testing Price List

Code/Description	*Full Year	Code/Description	*Full Year	Code/Description	*Full Year
HEMATOLOGY					
210/Hematology	\$168	644/Urine Culture/Strep Antigen	\$237	NEW! 782/ANA Expanded	\$201
211/Basic Hematology	\$156	645/Urine/Throat Culture	\$237	NEW! 783/ANA Expanded A	\$144
212/Hemoglobin/Hematocrit	\$135	646/GC Culture	\$237	CHEMISTRY	
213/Hemoglobin/Hematocrit W	\$108	647/Urine Culture/Presump.ID/CC	\$276	810/Chemistry	\$288
215/Hemoglobin/Glucose—HemoCue	\$123	648/Colony Count	\$177	811/Cholestech W Chemistry	\$141
223/Abbott 5-Part Diff	\$273	649/Presump.ID/CC/Strep A Antigen	\$261	812/Piccolo Waived Chemistry	\$177
224/Sysmex 3-Part Diff	\$201	650/Gram Stain	\$147	813/Comp. Metabolic Panel	\$219
225/Hematology 3-Part Diff	\$201	652/Throat Culture/Urine Presump ID	\$276	814/Basic Metabolic Panel	\$168
226/Hematology 5-Part Diff	\$273	654/GC Culture A	\$93	815/Hepatic Profile	\$189
227/QBC Hematology	\$273	660/Strep A Antigen Detection	\$138	816/Hepatic Profile A	\$36
228/Hematology 5-Part diff- ACT 5 & Pentra 60C+	\$273	662/Strep A Antigen W	\$81	817/i-STAT Chemistry 1	\$336
NEW! 229/Hematology 5-Part diff-Sysmex XE/XT	\$273	668/Affirm VP Antigen Testing	\$351	818/i-STAT Chemistry 2	\$198
230/Blood Cell Id A	\$27	670/Chlamydia (EIA, DNA)	\$267	819/Chemistry 1	\$165
231/Blood Cell Id—stand alone	\$87	673/Chlamydia A	\$111	820/Chemistry 2	\$195
240/Reticulocyte Count	\$177	675/Chlamydia/GC (EIA, DNA)	\$291	821/Chemistry 3	\$225
247/Sed Rate	\$138	678/Dermatophyte Screen	\$150	822/Add'l Chemistry	\$36
NEW! 248/Sed Rate-Sedimat15	\$138	680/Rapid Antigen Det I W	\$153	823/Enzyme Chemistry	\$36
250/Body Fluid/Cell Count	\$135	681/Rapid Antigen Detection I	\$246	824/Thyroid Profile	\$201
COAGULATION					
320/Coagulation	\$147	682/Rapid Antigen Detection II	\$216	825/Thyroid Profile A	\$45
321/Prothrombin Time	\$138	683/Giardia lamblia/ Cryptosporidium Ag Det	\$198	826/Lipid Profile	\$195
325/CoaguChek S Prottime	\$186	686/Legionella Antigen Detection	\$153	827/Lipid Profile A	\$36
327/CoaguChek S Prottime W	\$123	687/Strep Pneumoniae Antigen Det.	\$153	829/Apolipoproteins	\$105
328/i-STAT Prottime	\$210	690/Parasitology	\$198	830/TDM	\$195
329/ITC Prottime W	\$123	NEW! 695/MRSA Screen	\$237	831/TDM A	\$45
NEW! 330/CoaguChek XS	\$186	IMMUNOLOGY			
BLOOD BANK					
451/ABO & Rh Factor (D Type)	\$261	750/Immunology	\$225	NEW! 835/Serum Alcohol/Acetone	\$198
452/Blood Bank I	\$522	751/Rheumatology – NOT HIGH SENSITIVITY	\$153	NEW! 836/Ammonia	\$132
453/Blood Bank II	\$540	755/Infectious Mono W	\$87	841/Neonatal Bilirubin	\$192
URINALYSIS					
530/Urinalysis	\$78	NEW! 756/Tear Lactoferrin	\$105	842/Direct Bilirubin A	\$30
531/Urinalysis Dipstick	\$60	NEW! 757/Tear IgE	\$132	845/Cardiac Markers	\$156
532/Urine Sed Id	\$84	761/Infect Mono/Rheumatoid Factor	\$210	846/BNP	\$177
533/Urine Sed Id A	\$18	762/Infectious Mono	\$147	847/Blood Gases	\$261
534/PPM	\$87	763/Rheumatoid Factor	\$147	848/Biosite Triage Cardiac Panel	\$345
535/PPM A	\$21	764/CRP	\$84	850/Glycohemoglobin	\$135
536/Microalbumin—Quant A	\$69	765/HS-CRP	\$87	NEW! 851/Afinion Glycohemoglobin	\$135
537/Fecal Occult Blood A	\$63	766/ANA LATEX	\$141	855/Fructosamine	\$132
538/KOH Slide	\$111	767/ANA (ELISA/IMMUNO ONLY)	\$141	NEW! 859/PSA A	\$36
539/Microalbumin	\$81	768/Complement C3, C4	\$168	860/Endocrinology/Hematology/ Oncol	\$171
540/Urine hCG A	\$18	769/Immunoglobulins, IgG, IgA, IgM	\$159	861/PSA	\$90
541/Urine hCG—stand alone	\$42	770/Specific Allergen Testing	\$309	862/Tumor Markers	\$348
542/Fecal Occult Blood	\$72	771/Rubella	\$144	863/Endocrinology 2	\$153
MICROBIOLOGY					
630/Bacteriology 1	\$249	772/Syphilis Serology	\$159	865/Serum hCG	\$147
640/Bacteriology 2	\$240	773/Diagnostic Allergy	\$309	866/Serum hCG A	\$72
641/Throat Culture	\$237	774/Lyme Disease Serology	\$195	868/Urine Drug Screening—Qual	\$165
642/Throat Culture/Strep A Antigen	\$237	775/Viral Markers	\$339	870/Whole Blood Glucose	\$228
643/Urine Culture	\$237	776/CRP A NOT HIGH SENSITIVITY	\$45	871/Whole Blood Glucose W	\$129
		777/HS-CRP A	\$48	880/Add'l Chem Testing Material	\$90
		778/ANA A (LATEX ONLY)	\$87	901/Waived and PPM Package	\$183
		779/ANA A (ELISA/IMMUNO ONLY)	\$87	100/Annual Fee (Includes Binder)	\$75
		780/H. pylori Antibody Det	\$129	LAB SUPPLIES	
		781/Mycoplasma Antibody	\$111	121/1mL Pipette	\$15
				126/Pipette Pump	\$21

W=Waived • **A**=Add-On • *Enroll after the 1st event and prices are prorated by 1/3 per event.

2009 MLE PT Order Form

1 New Enrollee
 Re-Enrolling Participant: MLE ID # _____

2 Bill To: (please print or type)

Contact _____
 Facility Name _____
 Address _____

 City _____ State _____ Zip _____
 Country (other than U.S.) _____
 Phone _____ Fax _____
 E-mail _____

3 Lab Director _____

4 CLIA ID # _____

5 Ship To: (no PO boxes for kit delivery)

Same as "bill to" address.
 Contact _____
 Facility Name _____
 Address _____

 City _____ State _____ Zip _____
 Country (other than U.S.): _____
 Phone _____ Fax _____
 E-mail: _____

Ship kit to different address (attach information)

6 Send a copy of my proficiency testing results to:

CMS COLA-ID # _____
 State Agency-ID # _____
 Other (attach name, address and phone number)

Activate Auto Renewal at no charge.
 (see next page for details)

Quantity	Module #	Description	Price	Ext.	Quantity	Module #	Description	Price	Ext.
2	210	Hematology Module	\$168	\$336					

Please note: Cancel a module IN WRITING up to 4 weeks prior to the upcoming shipment to avoid being

The MLE products you have ordered may contain pathogenic material. By returning this order form, you assume all risk and responsibility in connection with the receipt, handling, storage, use, and disposal of the material.

FOR MLE USE ONLY

8 Method of Payment

(Tax ID # 23-1520302)

Check (payable to ACP/MLE)

US funds drawn on US bank disclosure

Purchase Order # _____

Send Invoice Charge to: VISA MasterCard

Card # _____

Exp. _____

Name _____

Signature _____

Mailing the Order Form/Renewal Form

WITH check:

R0800
 ACP/MLE
 PO Box 7777
 Philadelphia, PA 19175-0800

WITHOUT check:

Medical Laboratory Evaluation
 Suite 700
 25 Massachusetts Avenue, NW
 Washington, DC 20001-7401

9 Amount Due

Total Cost of Items Above= \$ _____

-Less Eligible Discount
 (Offers CANNOT be combined) = \$ _____

1- MLE + ACP Membership - SAVE \$75

ACP Member No. _____

2- NEW MLE + COLA Member - SAVE \$75

3- NEW COLA, MLE, ACP Member - SAVE \$75 + 10%

ACP Member No. _____

4- Multi-Site Organization - SAVE 10%

5- Consultant-SAVE 10%

8- Federal Agency - SAVE 15%-25%

9- Recruit 1, Waive 2 - SAVE \$75

Referring lab's MLE ID # _____

13- Former MLE Participant - SAVE 10%

ADV9-1 - SAVE \$75

ADV9-2 - SAVE \$75

ADV9-3 - SAVE \$75

ADV9-4 - SAVE \$75

ADV9-5 - SAVE \$75

ADV9-6 - SAVE \$75

ADV9-7 - SAVE \$75

ADV9-8 - SAVE \$75

+Annual Administration Fee
 (\$75, if no discount applies) \$ _____

Total Amount Due = \$ _____

FAX this form to: 202-835-0440
(call 1-800-338-2746, option 5,
to confirm receipt of fax)