



Ventilation/Perfusion Scintigraphy

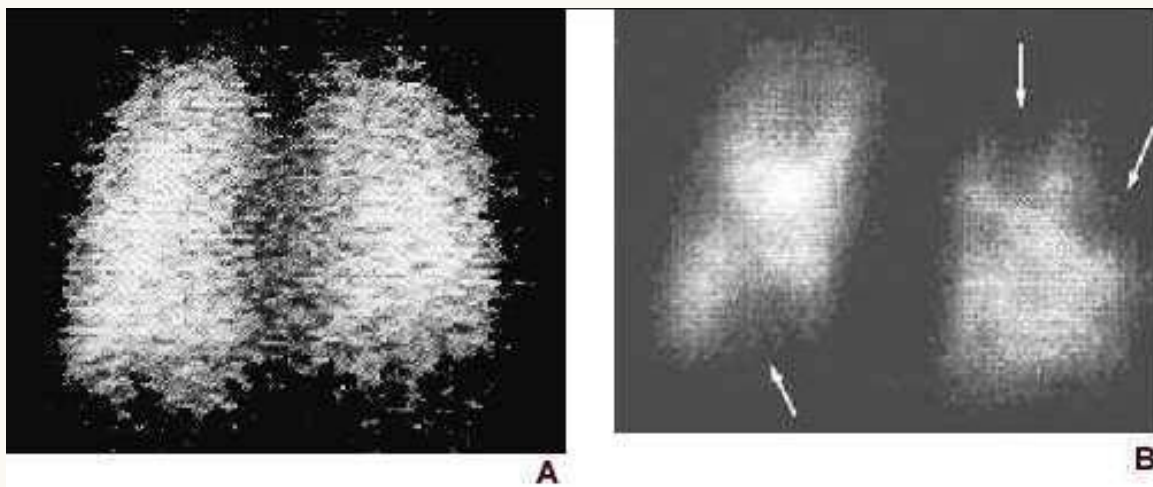


Figure A is the posterior projection of the ventilation portion of the ventilation/perfusion scan. It shows relatively homogeneous tracer distribution. Figure B is the posterior projection of the perfusion portion of the study showing irregular, peripheral wedge-shaped perfusion defects (arrows). The perfusion defects occur in areas of normal ventilation, representing "V-Q mismatches" and is compatible with a high probability lung scan.