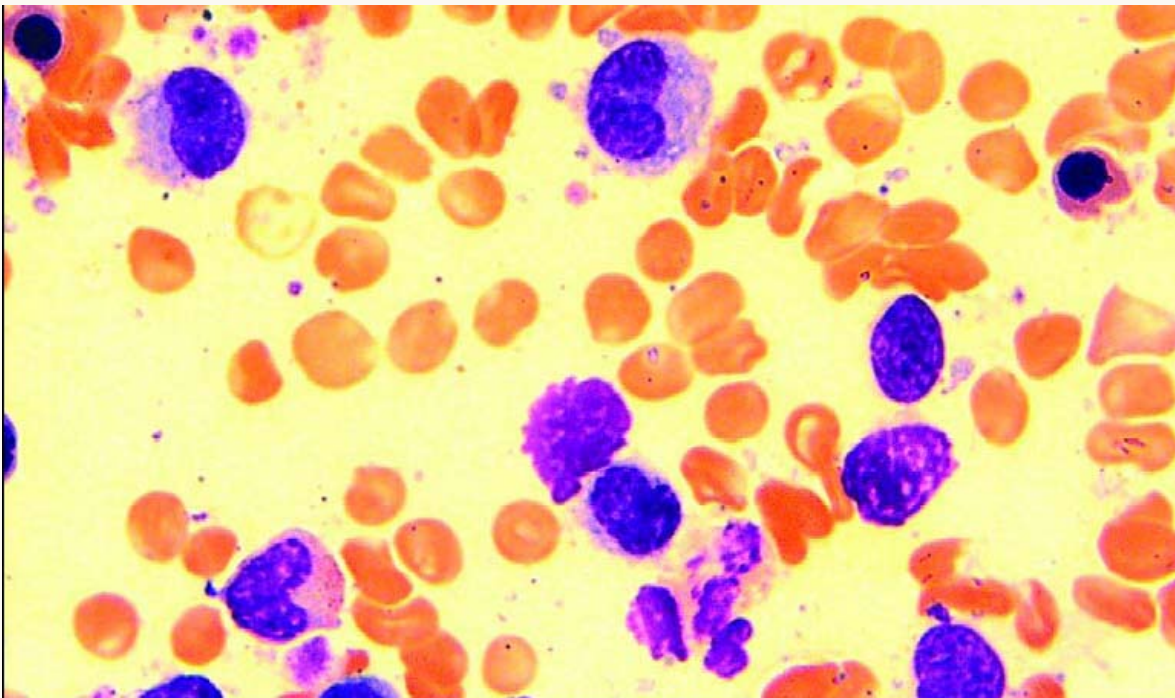




Chronic Lymphocytic Leukemia



Peripheral blood smear showing an abnormal accumulation of morphologically mature-appearing lymphocytes and two “smudge cells” in the center and bottom of the slide. Diagnosis is established by flow cytometry demonstrating a characteristic immunophenotype (CD5⁺, CD20⁺, and CD23⁺ B cells).