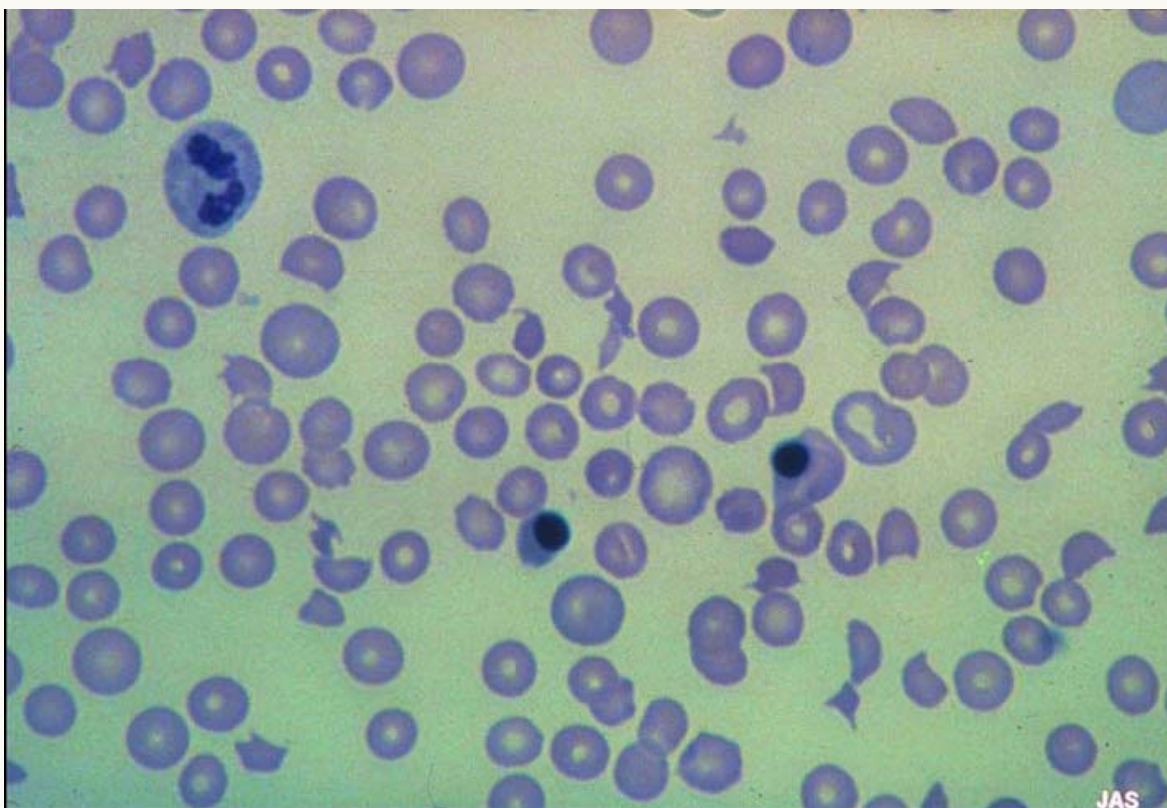




Thrombotic thrombocytopenic purpura



Peripheral blood smear showing marked anisocytosis and poikilocytosis with prominent erythrocyte fragmentation characteristic of intravascular destruction. These findings may be found in association with thrombotic thrombocytopenic purpura, hemolytic uremic syndrome, disseminated intravascular coagulation, and the HELLP syndrome.