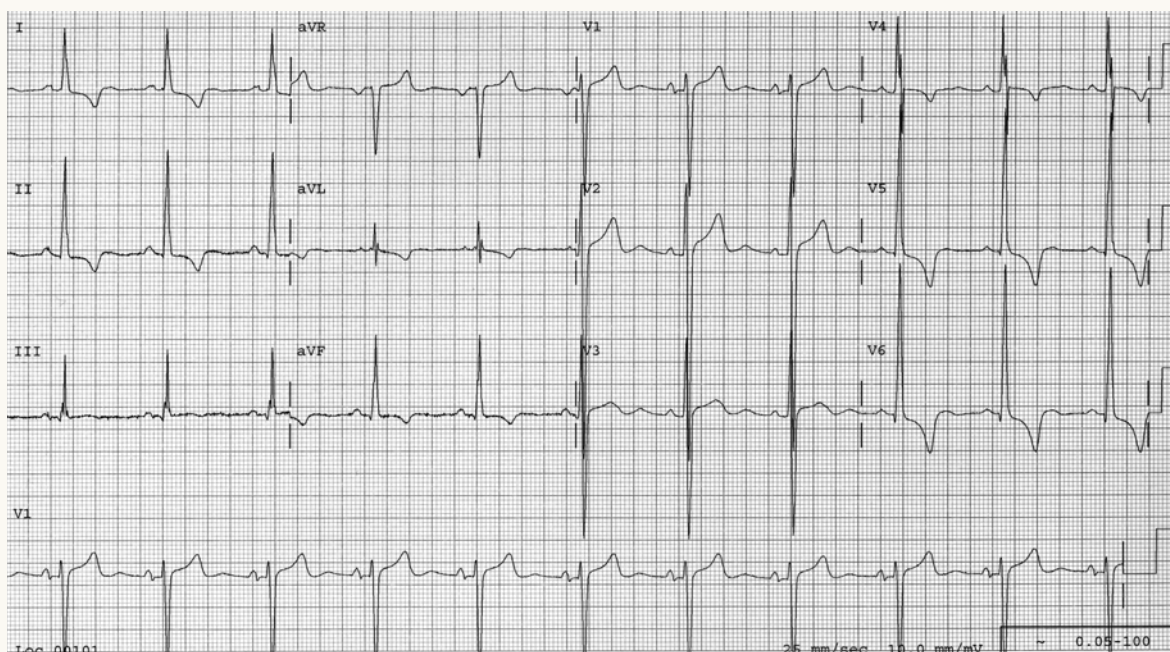




Electrocardiogram



Several criteria are used to diagnose left ventricular hypertrophy by electrocardiography. A few selected criteria include:

1. R wave in aVL plus S wave in V3 >28 mm (men) or >20 mm (women)
2. R wave in lead aVL > 11 mm (specific but not sensitive)
3. Sum of QRS voltage in all leads >175 to 225 mm
4. S wave in lead V1 plus R wave in V5 or V6 (tallest) ≥ 35 mm.